

"Brickwall" Single TV Channel Deletion Filter

3271 For Sub Band

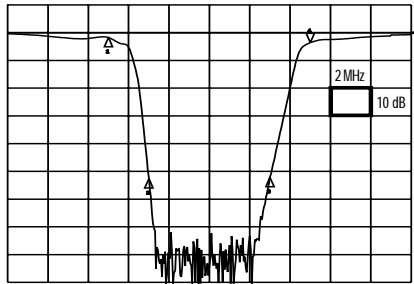


3271 & 3272 Series

This series of deletion filters attenuates the entire channel spectrum from video carrier to aural carrier to allow reinsertion of new information without interference.

The 55 dB (typical) continuous suppression from video carrier to aural carrier has been found to be more than ample for reinsertion.* Attenuation drops sharply at channel edges to preserve upper and lower adjacent channels. The operating temperature for model 3271Sub-160-167 is from 0° C to 50° C. The operating temperature for model W3272/R3272 is from 5° C to 35° C.

All models are AC/DC passing. 1 amp Max.



Typical Frequency Response of 3271Sub

Special assemblies of several channel deletion filters are available for:

- Suppressing contiguous channel blocks (see model 7964 on page 15)
- Suppressing several non-contiguous channels (see model 6971 on page 15)
- Spectrum splitting "Brickwall" highpass or lowpass filters (see model 6211 on page 14)

Model Number Sub/Low Band	Freq Range (MHz)	Adjacent Carrier Insertion Loss (Max)
3271Sub-Channels 160-167 (T7-T14)	5.75-53.75	5 dB
W3272/R3272-Channels 2 to 6	54-88	4 dB



Channels	Upper Passband Limit (MHz)	Insertion Loss (Typical)
160-167 (T7-T14)	750**	2.0 dB
2 to 6	750**	1.0 dB

*With input signal levels lower than +12 dBm

**Can be extended to 1 GHz with external passband extender (Model 10500 shown on page 8)

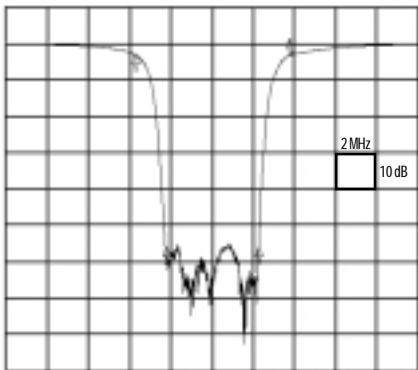
Mechanical Specifications:

3271Sub-band Baseplate Dimensions: 6" x 2.25"

R3272 Dimensions: 19" L x 1.75" H x 6" D (Rack Mount)

W3272 Dimensions: 13.25" L x 1.75" H x 6.125" D (Wall Mount)

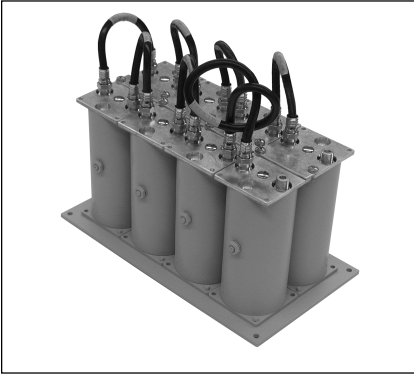
Connectors: 75 ohms - Type "F"



Typical Frequency Response of 3272

"Brickwall" Single TV Channel Deletion Filter

3271 For Mid/High/Super/Hyper



Select Models pass up to 1 GHz without an external passband extender.

3271 Series

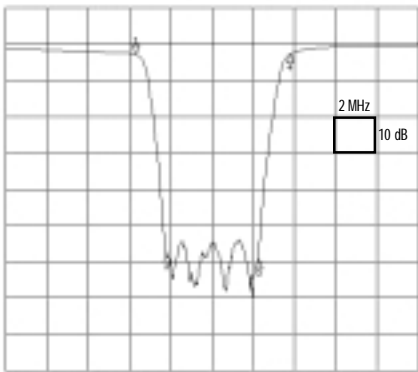
The 3271 series of deletion filters attenuate the entire channel spectrum from video carrier to aural carrier to allow reinsertion of new information without interference.

The 55 dB (typical) continuous suppression from video carrier to aural carrier has been found more than ample for reinsertion.* Attenuation drops sharply at channel edges to preserve upper and lower adjacent channels. The operating temperature for 3271 Mid/High/Super/Hyper is from 10° C to 32° C.

All models are AC/DC passing. 1 amp Max.
(All units pass return band 5-48 MHz)

Special assemblies of several channel deletion filters are available for:

- Suppressing contiguous channel blocks (see model 7964 on page 15)
- Suppressing several non-contiguous channels (see model 6971 on page 15)
- Spectrum splitting "Brickwall" highpass or lowpass filters (see model 6211 on page 14)
- Temperature compensated models available



Typical Frequency Response of 3271ABH

R3271 For Mid/High/Super/Hyper



Model Number	Freq Range (MHz)	Adjacent Carrier Insertion Loss (Max)
3271ABM-98, 99, 14 to 22	108-174	3 dB
3271ABH-7 to 13	174-216	3 dB
3271ABS-23 to 36	216-300	4 dB
3271ABY-37 to 61	300-450	5 dB
3271ABY-62 to 116	450-750	6 dB
UHF Channels		
3271ABU-14 to 69	470-806	6 dB

Channels	Upper Passband Limit (MHz)	Insertion Loss (Typical)
98, 99, 14	550**	1.5 dB
15 to 19	750**	1.5 dB
20 to 22, 7 to 9	850**	1.0 dB
10 to 13, 23 to 61	1000	1.0 dB
62 to 116	1000	2.0 dB
14 to 69 (UHF)	1000	1.5 dB

* With input signal levels lower than +12 dBm.

**Can be extended to 1 GHz with external passband extender (Model 10500 shown on page 8)

Mechanical Specifications:

3271ABM, 3271ABH, 3271ABS, 3271ABY & 3271ABU:

Baseplate Wall Mount Dimensions: 9" x 5"

R3271ABM, R3271ABH, R3271ABS, R3271ABY & R3271ABU:

Rack mount: 19" L x 3.5" H x 13" D

Connectors: 75 ohms - Type "F"