

APC Back-UPS® Pro



Premium Battery Backup with Surge Protection for High Performance Electronics and Computers

700VA, 1000VA, 1300VA, 1500VA

- *Reliable*
- *Energy Efficient*
- *User Friendly*

The Back-UPS Pro series offers your home and business guaranteed power protection for high performance computer systems, routers/modems, external storage devices, game consoles and other electronics.

Abundant backup power, auto-shutdown software and protection from damaging surges and spikes are coupled with the Back-UPS Pro's energy saving features, voltage regulation, LCD display and other premium features to make these the perfect units to protect your data and keep you available.



BR1000G

BR1500G

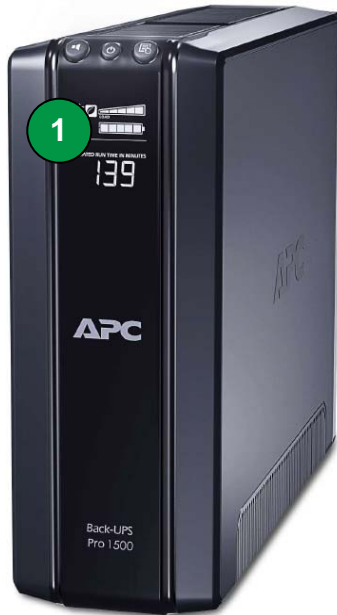
BR700G



APC Back-UPS Pro Features



Standard on all Back-UPS Pro models



- 1 LCD (Liquid Crystal Display)** gives utility and battery backup the status.
- 2 Automatic Voltage Regulation (AVR)** instantly corrects voltage fluctuations so you can work indefinitely through brownouts and overvoltages.
- 3 “Battery Backup & Surge Protected” Outlets** keep a CPU, monitor and other critical devices running when the power goes out or fluctuates outside safe levels.
- 4 “Surge Only” Outlets** protect printers, faxes or other equipment without reducing battery capacity. (Includes power-saving “Controlled” outlets).
- 5 Data Line Surge Protection** guards against surges and spikes traveling over 10/100/1000 Base-T (gigabit) Ethernet network data lines.
- 6 PowerChute Software** lets you use your computer to access additional power protection and management features:
 - Preserves your work, shuts down system during outages
 - Restarts your system, minimizing work disruptions
 - Enables customization of your Back-UPS settings
 - Monitors and displays power and battery status
- 7 Push Button Circuit Breaker** enables quick recovery from overloads.
- 8 3 Yr Warranty** for US and Canada, \$150,000 Equipment Protection Policy (US and Canada), free technical phone and online support.
- 9 Automatic Diagnostic Testing** ensures your unit is ready when you need it.
- 10 External Battery Pack Compatibility** dramatically increases run time. (BR1500G only)

APC Back-UPS Pro LCD Display

Easy to read status of utility and battery backup conditions

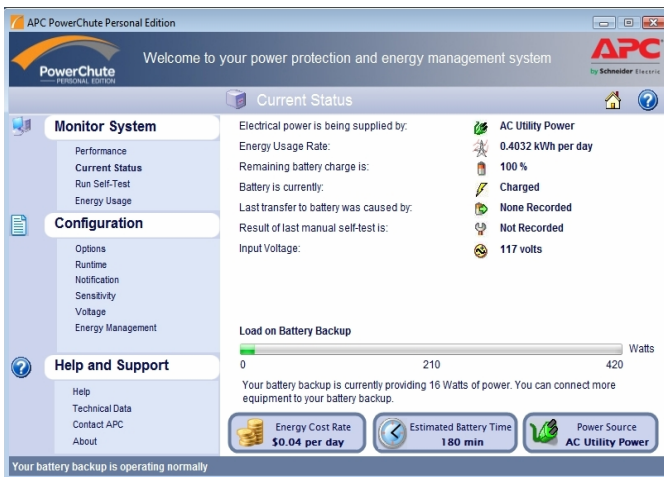


Parameters Displayed:

- Input Power (On Battery/On Utility)
- Input Voltage
- Output Voltage
- Output Frequency
- Load (Watts, % of Capacity, Graphic Display)
- Overload
- AVR Working
- System Fault
- Replace Battery
- Battery Charge Status (Graphic Display)
- Estimated Run Time
- Power Saving Mode (Enabled/Disabled)
- Mute (Enabled/Disabled)
- Number of Power Events

APC PowerChute® Personal Edition

Easy-to-use auto-shutdown software with power and energy management features



- Easy to read view of current power conditions.
- Displays daily energy consumption and cost of powering your equipment.
- Saves money by allowing you to choose an energy management plan that fits your needs.
- Prevents data corruption by saving files and shutting down your system during extended power outages or low battery condition.
- Monitors system, and logs utility power problems and battery conditions
- Allows you to configure Back-UPS options like voltage transfer settings, silencing alarms during night hours, shutdown parameters, energy management features, etc.)
- Easy Installation takes the guesswork out of configuration for first-time users with a jargon-free help feature. (USB and serial interface).

Back-UPS Pro Specifications

Model Number	BR700G	BR1000G	BR1300G	BR1500G
Output				
Output Capacity	700 VA / 420 W	1000 VA / 600 W	1300 VA / 780 W	1500 VA / 865 W
Output (on utility)	120V, 50 or 60 Hz, +/- 3Hz (auto sensing)			
Output (on battery)	115V +/-8%, 50 or 60 Hz +/-1 Hz (auto sensing)			
Output Connections	6 total NEMA5-15R outlets: 3 battery & surge 3 surge only (incl. 2 <i>Controlled</i> outlets)	8 total NEMA5-15R outlets: 4 battery & surge (incl. 1 <i>Controlled</i>) 4 surge only (including 2 <i>Controlled</i> outlets)	10 total NEMA 5-15R outlets: 5 battery & surge (incl. 1 <i>Controlled</i>) 5 surge protection only (incl. 3 <i>Controlled</i> outlets)	
Waveform Type	Stepped Approximation to Sine Wave			
Input				
Input Volt., Freq	120V, 50 or 60 Hz, +/- 3Hz			
Input Connection	6 ft cord with NEMA 5-15 plug			
Surge Protection				
AC Power	All outlets protected			
Data Line	Network: 10/100/1000 Base-T Ethernet (gigabit) Coax cable (CATV, SATV, modem, A/V)			
Physical				
Unit Dims HxWxD	7.5 x 3.6 x 12.2" (19.0 x 9.1 x 31.0 cm)	9.8 x 3.9 x 15.0" (25.0 x 10.0 x 38.2 cm)	11.9 x 4.4 x 15.0" (30.2 x 11.2 x 38.1 cm)	11.9 x 4.4 x 15.0" (30.2 x 11.2 x 38.1 cm)
Unit Weight	15.7 lbs (7.2 kg)	23.6 lbs (10.7 kg)	28.3 lbs (12.9 kg)	28.3 lbs (12.9 kg)
Shipping Dim HxWxD	5.4" x 9.9" x 17.4" (13.7 x 25.2 x 44.2 cm)	15.0 x 9.0 x 19.0" (38.1 x 22.9 x 48.3 cm)	15.0 x 9.25 x 19.0" (38.1 x 22.9 x 48.3 cm)	15.0 x 9.25 x 19.0" (38.1 x 22.9 x 48.3 cm)
Shipping Weight	17.5 lbs (8.0 kg)	28.0 lbs (12.7 kg)	30.8 lbs (14.0 kg)	31.9 lbs (14.5 kg)
Color	Black			
UPC Code	731304266792	731304278788	731304268765	731304268772
Battery				
Battery Type	Sealed, lead-acid, maintenance-free			
External Battery Pack Compatibility	No			Yes (Use p/n: BR24BPG)
Management				
Alarms	Visual (LCD display) and audible alarms			
Shutdown S/W	PowerChute Personal Edition (via USB and serial interface)			
Safety				
Certification/ Approvals	FCC Part 15 Class B, NOM, TUV, UL 1778	FCC Part 15 Class B, NOM, TUV, UL1778	FCC Part 15 Class B, NOM, TUV, UL1778	FCC Part 15 Class B, NOM, TUV, UL1778

APC by Schneider Electric

132 Fairgrounds Rd
West Kingston, RI 02892

Provided by: Mega Hertz | 800-883-8839 | info@go2mhz.com | www.go2mhz.com

