

UHF Parabolic Antennas

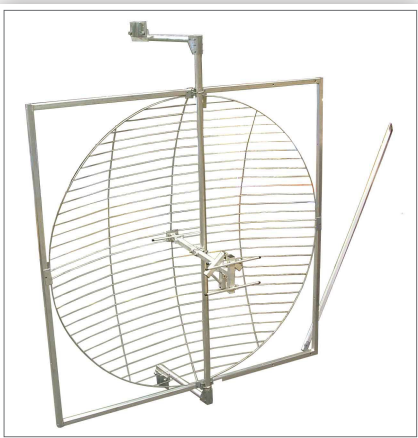
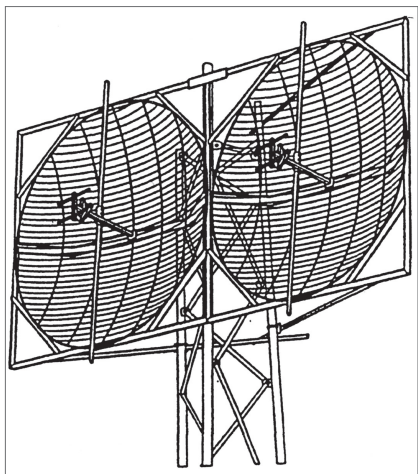
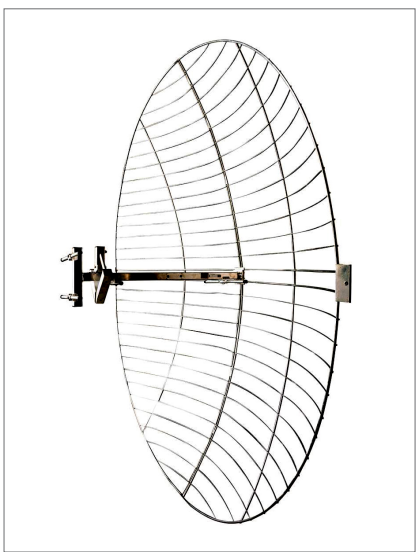
D-1338-BB, PB-61-BB, PB-81-BB, PB-82-BB

Description

Our series of UHF parabolic receive antennas covers the entire UHF-TV spectrum. The versatility of these antennas allow the CATV system operator to solve difficult reception problems by using them singly or in an array to attain required gain or beam width. By using grid type, as opposed to solid reflectors they avoid wind loading issues, even in a dual array arrangement. This makes installations at higher elevations permissible with no change in tower construction requirements.

Features

- High gain, narrow beam width
- Broad bandwidth
- Available as single antennas or dual arrays
- Grid type reflector minimizes wind load
- Arrays assemble on the ground using modular individual antennas
- Rugged construction for long life in harsh environments
- Hot Dip galvanized screen



ELECTRICAL SPECIFICATIONS

MODEL	D-1338-BB	PB-61-BB	PB-81-BB	PB-82-PB
CHANNEL	14 - 83	14 - 83	14 - 83	14 - 83
GAIN (dBi)	13 to 17	15 to 20	19 to 22	21 to 25
IMPEDANCE	75 Ohm	75 Ohm	75 Ohm	75 Ohm
VSWR	1:6:1	1:6:1	1:6:1	1:6:1
POLARIZATION	Horiz.	Horiz.	Horiz.	Horiz.
H. BEAM WIDTH	>30 deg.	20 deg.	16 deg.	5 deg.
V. BEAM WIDTH	>35 deg.	17 deg.	12 deg.	12 deg.
CONNECTOR	"F" Connector	"F" Connector	"F" Connector	"F" Connector
PIPE SIZE *	2" to 4"	2" to 4"	2" to 4"	2" to 4"

* Larger pipe size mounting available on request.

** See reverse for Antenna Gain Response curves and Mechanical Specifications. **

Wade Antenna's ongoing policy of continuing development may result in specification changes to its products.

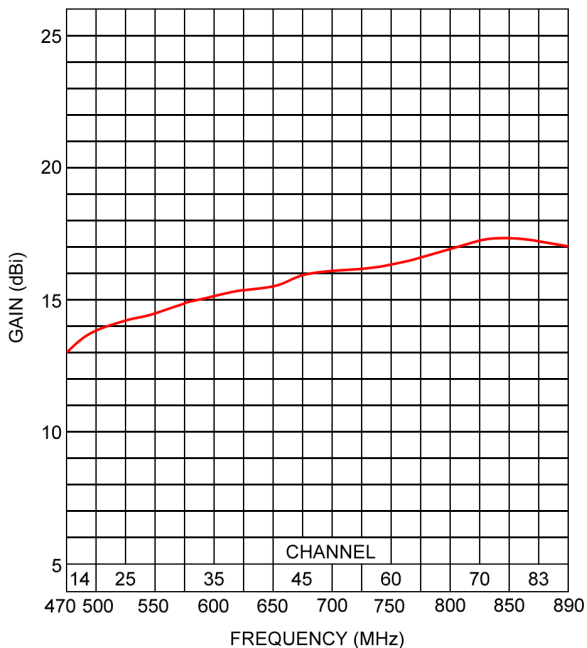
MECHANICAL SPECIFICATIONS

MODEL	D-1338-BB	PB-61-BB	PB-81-BB	PB-82-PB
DIAMETER	4 ft.	6 ft.	8 ft.	Dual 8 ft.
WEIGHT (lbs.)	25	70	100	155
THRUST (lbs.)				
NO ICE *	49	187	389	738
1" RADIAL ICE **	113.1	256	532.6	1011.1
TORQUE (ft. - lbs.)				
NO ICE *	24.5	140.5	389	1476
1" RADIAL ICE **	56.6	192	532.6	2022.2
WIND LOAD AREA (sq. ft.)				
NO ICE *	1.36	5.19	10.8	20.5
1" RADIAL ICE **	12.57	28.44	59.18	112.34

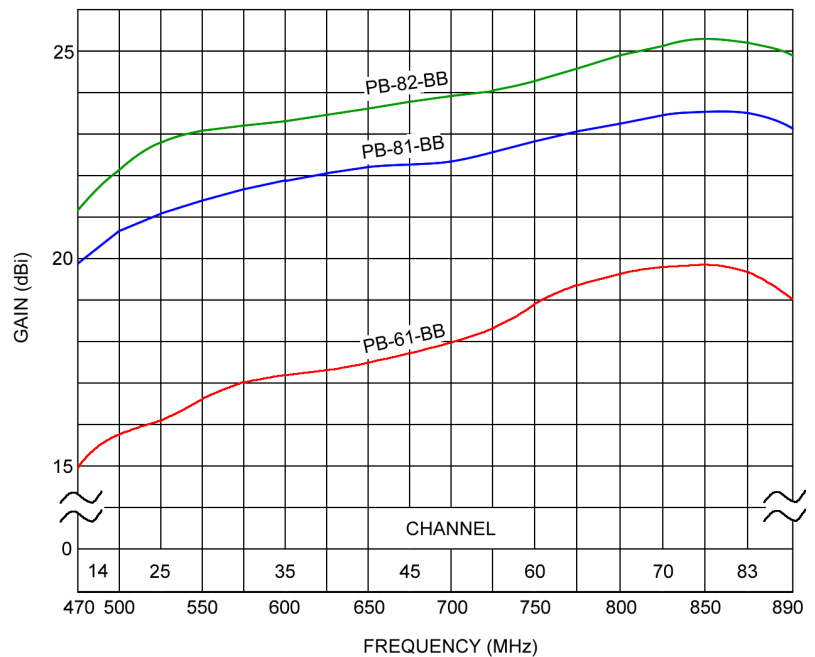
* Wind Speed 100mph

** Half Wind 50mph

D-1338-BB GAIN RESPONSE



PARABEAM ANTENNAS GAIN RESPONSE



Wade Antenna's ongoing policy of continuing development may result in specification changes to its products.