

VideoBridge Product Family



VideoBridge is the most comprehensive family of digital television monitoring and measurement products in the world.

IP Core Monitoring Probe

VB20



The VB20 provides the ability to continuously monitor 260 services for critical measurements. This makes the portable VB20 invaluable for field use. Its ruggedized exterior and fan-less design make this probe the perfect fault-finding tool for the field engineer. With full support for both the MPEG2 TS and MFRTP encapsulation standards and all current codecs, the VB20 is the tool of choice.

IP Distribution Monitoring Probe

VB12



The VB12 is the most portable GigE broadcast monitoring and measurement platform available. Featuring both optical and electrical GigE Ethernet inputs, separate management port and both ASI input and output.

IP & QAM/8VSB Monitoring Probe

VB12-RF



Sencore has extended its award-winning VideoBridge™ product line with VB12-RF, a highly portable RF/IP monitoring appliance for terrestrial and cable applications. With complete ETR101-290 analysis and alarming, the VB12-RF includes an interface for RF, ASI, GigE and IP in a compact and ruggedized chassis smaller than most laptop computers.

IP Edge Monitoring Probe

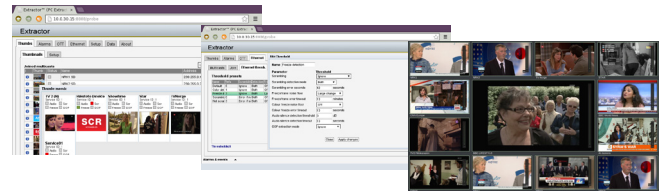
microVB



The microVB is a breakthrough in both form-factor and functionality for real-time analysis of customer home network performance. This unobtrusive device provides deep packet inspection and end-to-end visibility in broadcast quality media delivery over any IP based infrastructure including OTT media in unmanaged networks.

Advanced Content Extractor

VB7880



The VB7880 Objective QoE Content Extractor performs objective video and audio measurements of MPEG-2, H.264 and HEVC streams and offers remote video-wall capability. The VB7880 content extractor offers thumbnail and metadata extraction for up to 100 TV multicast streams concurrently via GigE interfaces. The VB7880 content extractor is ideal for visual at-a-glance monitoring in the NOC, VOC, head-end or remotely via any standard web browser.

IP 10G Core Monitoring Blade

VB330



The VB330 Probe is the flagship in Sencore's VideoBridge product line. It can be equipped with up to two 10GB Ethernet inputs providing the capability to monitor thousands of IP streams in central head-ends and network back-bone architecture. The VB330 utilizes a patented easy-to-use visual interface for measuring and monitoring IP signals throughout the entire network.

IP Core Monitoring Blade

VB220



The VB220 is a GigE monitoring platform for all applications in any network where digital video is carried across an IP infrastructure. This network service tool is ideal for both pure IPTV networks and hybrid networks with IP transport cores (such as digital cable and terrestrial networks).

IP Distribution Monitoring Blade

VB120



The VB120 broadcast probe is a real-time GigE monitoring platform with applications in any network where digital video is carried across IP infrastructure. Built specifically to industry needs, this network service tool is ideal for both pure IPTV networks and hybrid networks with IP transport cores such as digital cable and terrestrial networks where it is used as a controller for the RF interfaces including the VB252, VB262 and VB270 blades.

ASI Monitoring Blade

VB242



The VB242 ASI input option card allows operators real-time, high density ASI monitoring or switched ASI round-robin monitoring for remote or head-end applications. With up to 13 ASI inputs in a 1 RU chassis in combination with the VB220 or VB120 controllers, the VB242 is perfect for existing infrastructures in the head-end and the regional edge-multiplexer/ modulator/ transmitter site.

DVB-T/T2 RF Monitoring Blade

VB252



VB252 is a dual input DVB-T/T2 input interface module that enables monitoring of digital terrestrial transmissions. Two modules may be housed in a 1RU chassis together with a controlling VB120 or VB220 probe, providing high monitoring capacity occupying a minimum of rack space.

QAM / 8VSB Monitoring Blade

VB262



The VB262 DUAL QAM/8VSB input option offers monitoring of QAM signals as found in QAM cable networks and off-air 8VSB signals. The chassis can be equipped with a single VB120 or VB220 master card that has one or two VB262 input cards under its control.

DVB-S/S2 Dual Monitoring Blade

VB272



The VB272 input card offers monitoring and analysis of QPSK/8/16/32APSK signals found in DVB-S/S2 satellite transponders. A chassis can be equipped with a VB120 or VB220 PROBE controller and up to two VB272 input cards under its control.

Video Extractor Blade

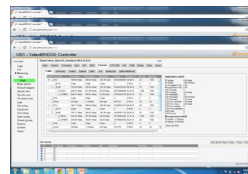
VB280



The VB280 Content Extractor offers thumbnail and metadata extraction for up to 100 TV multicast streams concurrently via the GigE interface. The VB280 Content Extractor is ideal for visual at-a-glance monitoring in the NOC, VOC, head-end or remotely via any standard web browser.

System Monitoring Server

VBC



The VideoBRIDGE controller is a server application offering central control and management of all VideoBRIDGE devices. The VBC gives unprecedented insight into network health and the flow of media streams. Users connect to the server using a standard web browser as the client with full control over probe configuration, stream status monitoring, service status monitoring, 4-day historical data-display with the Microtimeline™ technology, SNMP multi-destination trap forwarding, alarm logging and PDF report generation.

Provided by: Mega Hertz 800-883-8839 info@go2mhz.com www.go2mhz.com