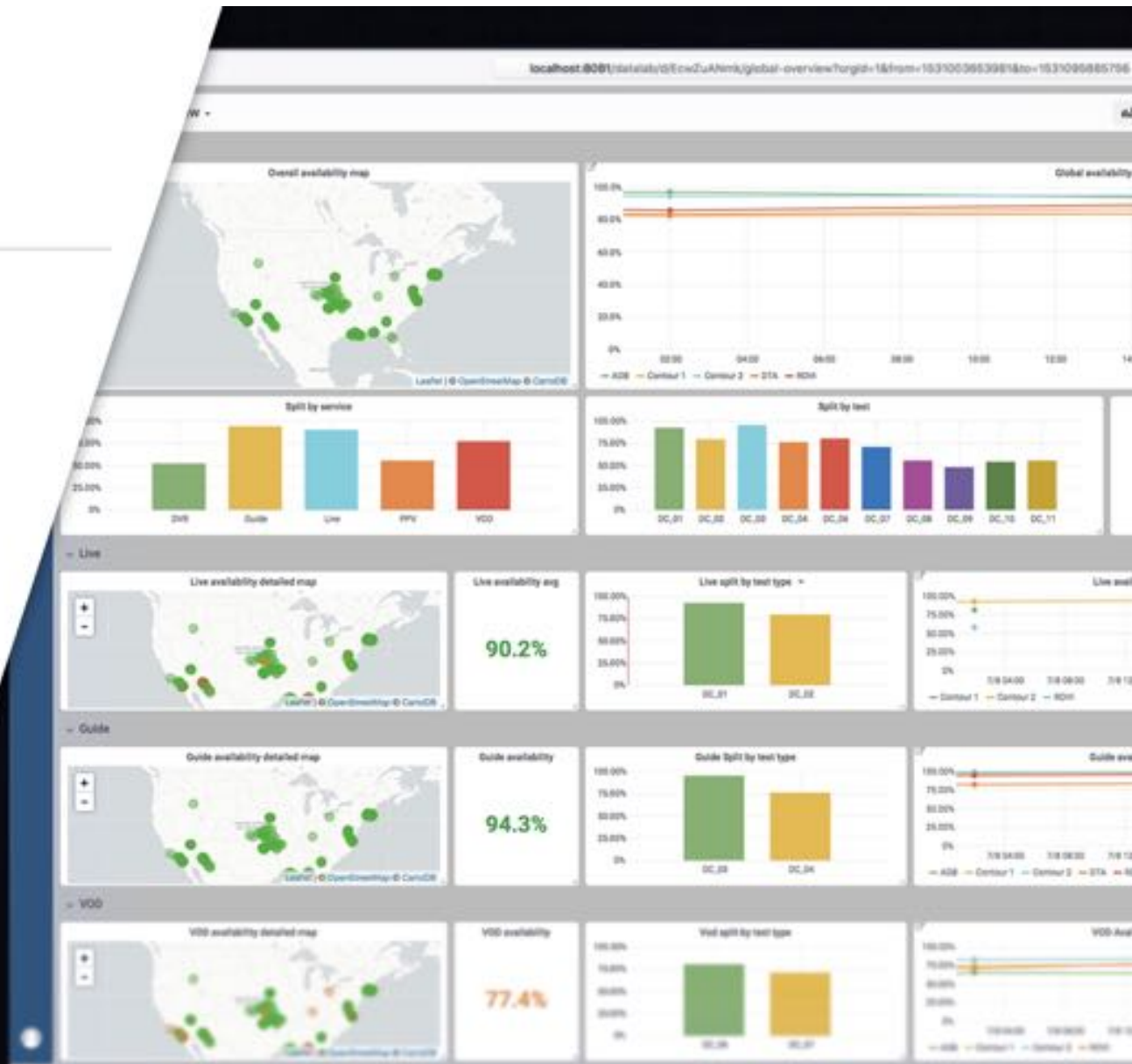
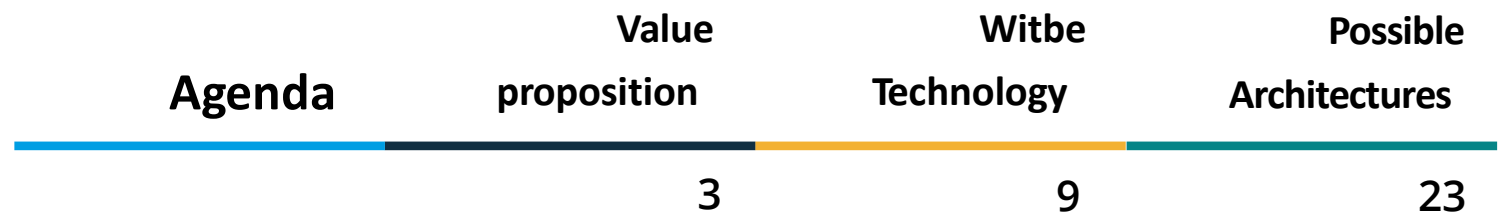




Improve your
Quality of Experience



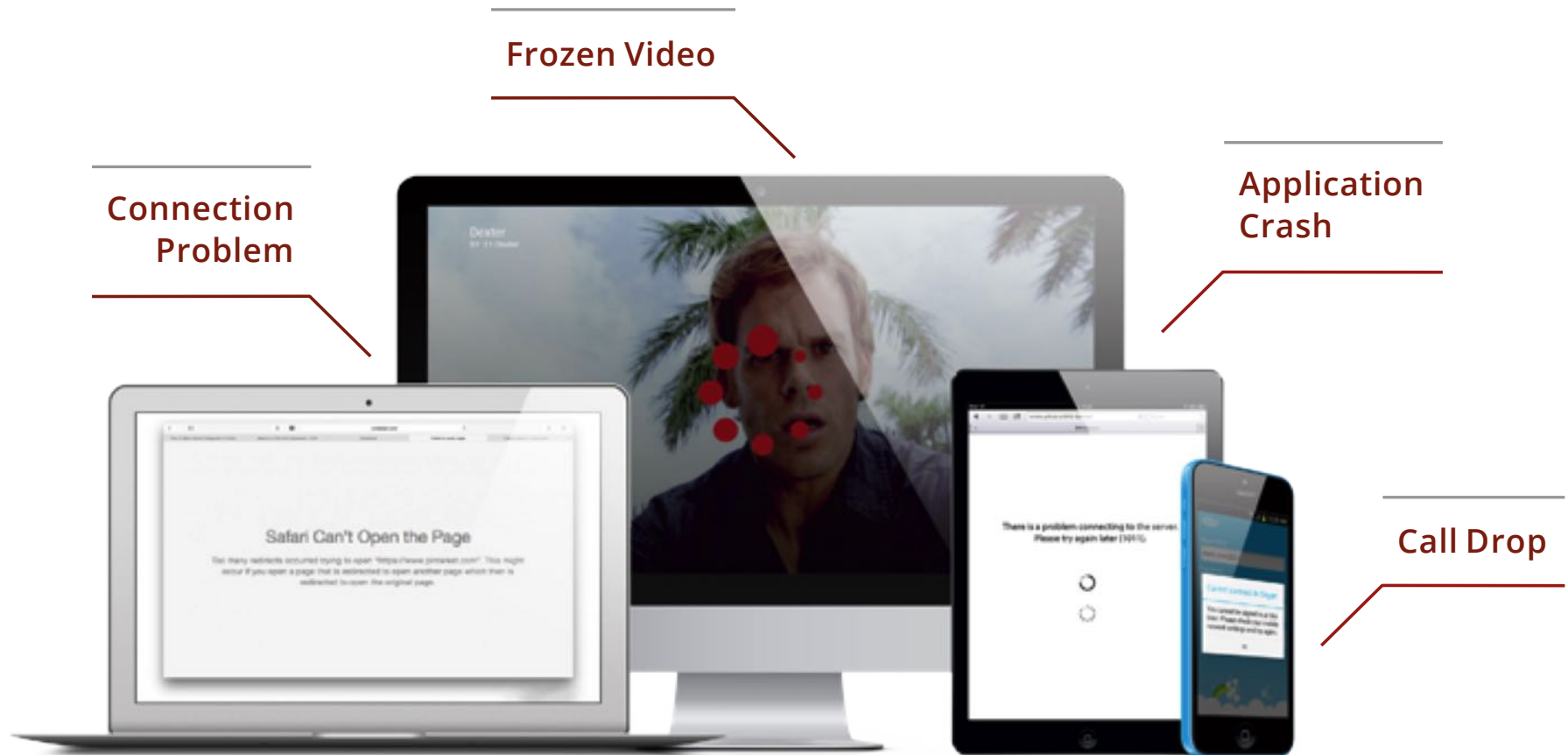


A

Value Proposition



Does this remind you of anything?



Our mission: the best Quality of Experience



Witbe helps companies **make sure the people** who use their digital services **enjoy the best experience possible**.

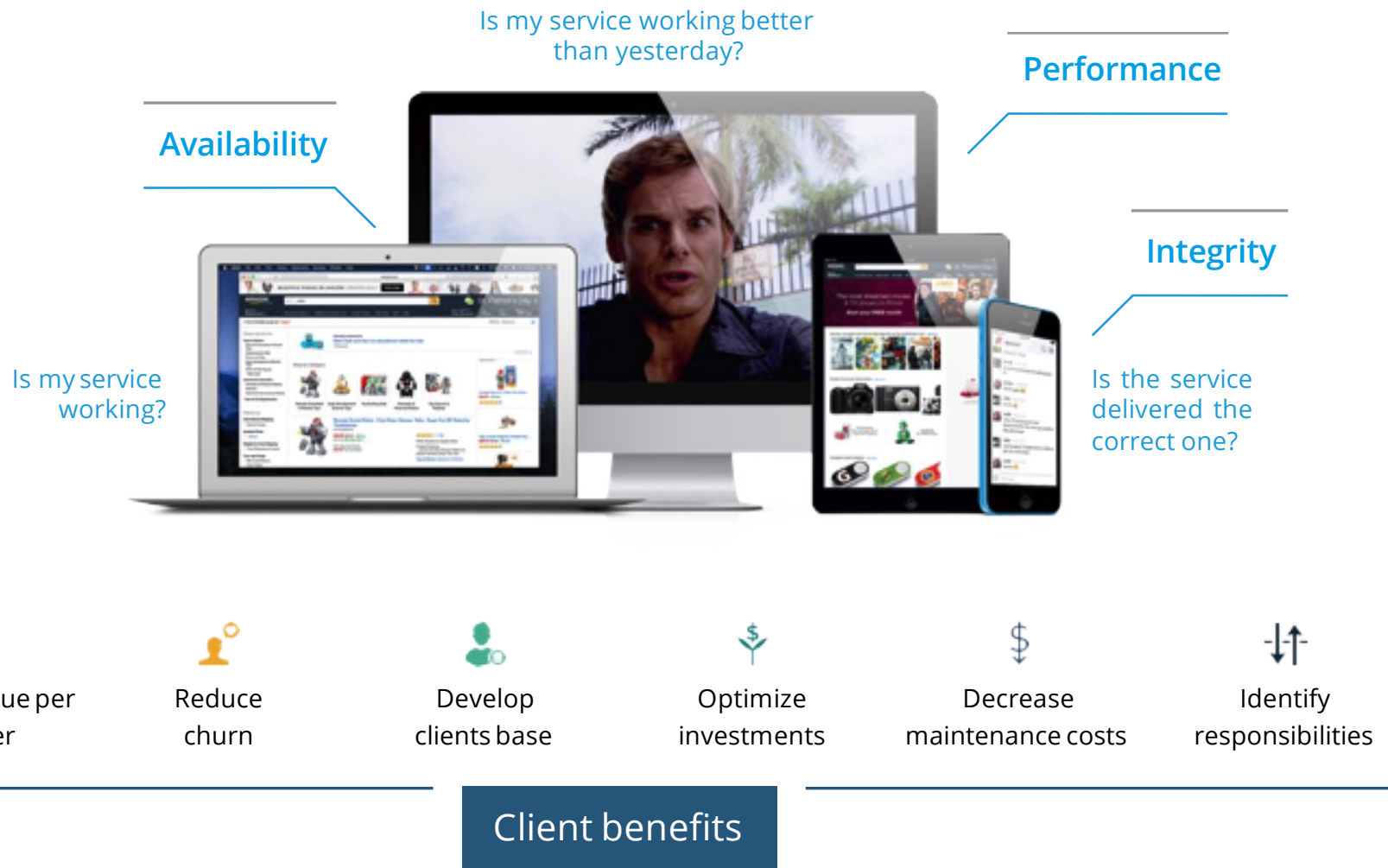
We do so by providing these companies with the technologies and analytics they need to test and proactively monitor the availability, performance and integrity of their digital services offering.

We use a new approach based on **active monitoring**, thanks to intelligent systems called « robots ». **Our robots are able to test any service, on any device, over any network.**



Witbe offers simple answers to complex operational needs

6



What makes Witbe so unique?

A non-intrusive technology

- › Critical business applications
- › Unified Communications
- › Telephony
- › VoD
- › Live TV
- › Mobile App
- › OTT

Multi-service

Unique Algorithms

- › Witbe Video MOS
- › Smartping
- › Remote Eye Controller
- › Witbe Earth

- › Fixed networks
(High-Speed, Cable, Fiber, Ethernet, etc.)
- › Mobile networks
(Wi-Fi, 3/4G, etc.)

Multi-network

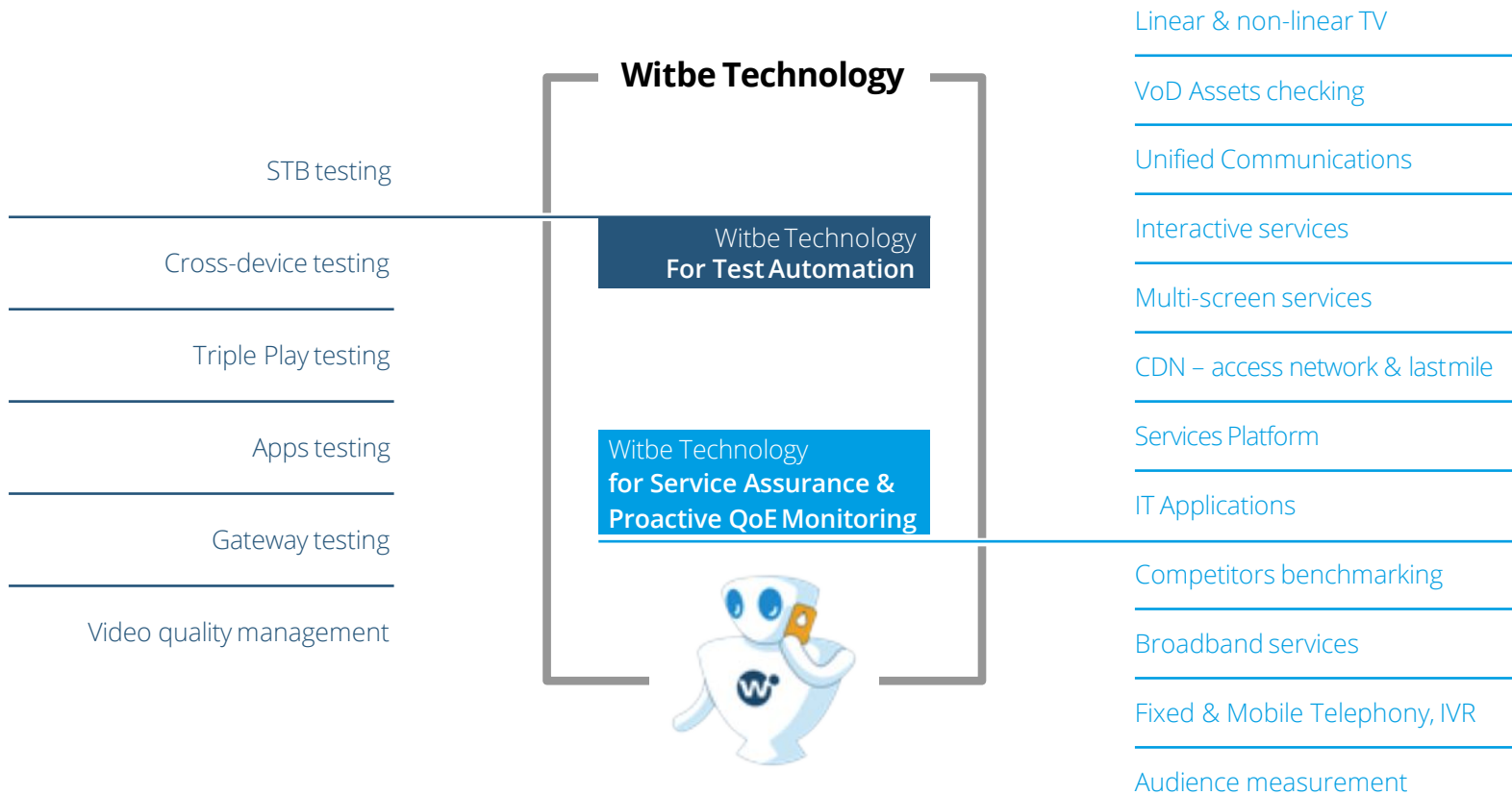
Easy to Use

- › Easy to setup
- › Easy to script
- › Easy to run
- › Scalable
- › User-Centric

- › PC
- › Set-Top Box
- › Mobile Phones
- › Tablets

Multi-device

Witbe Technology: a single platform covering a wide range of use cases

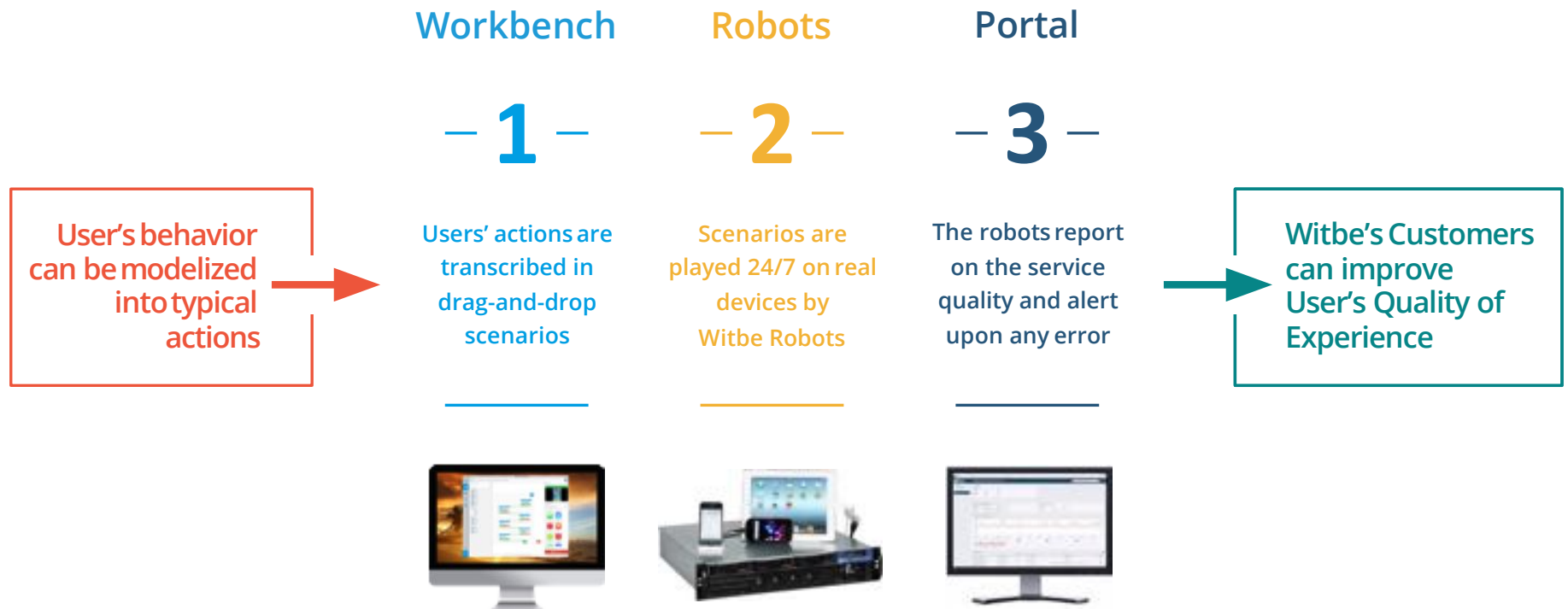


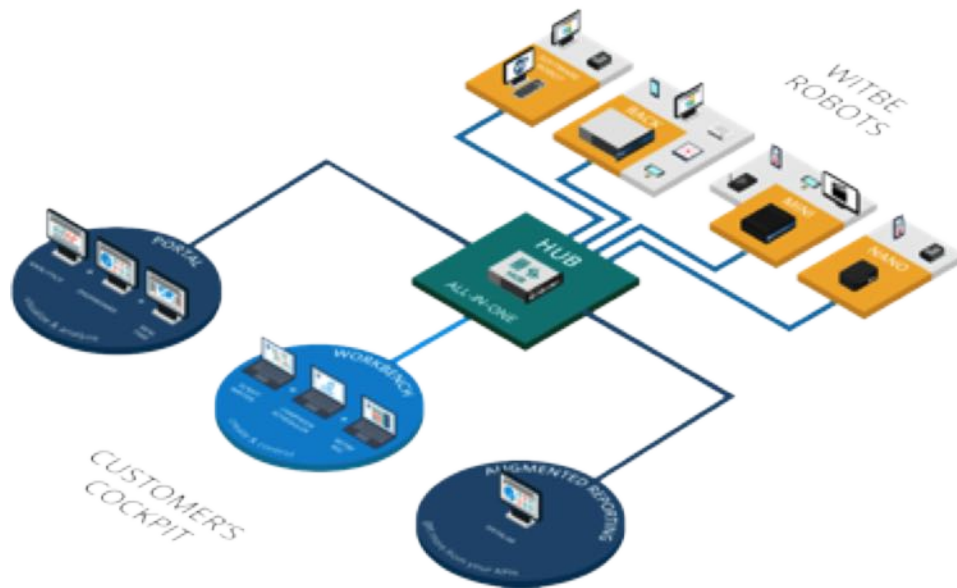


B

Witbe Technology







The **Customer's Cockpit** gathers three fundamental components. First, the **Workbench**, which offers an easy to use administration platform to create, launch and schedule scenarios and campaigns. Then, **Datalab** transforms the Witbe Robots' data into meaningful and high-level information, and **Witbe Portal** alerts in real- time of any service degradation.

The **Witbe Hub** is the backbone of the Witbe Galaxy. The Maestro handles the dispatch of the different requests and the resources to the different Robots, while the Central System and the Hub Preview store all the data and information produced by the Robots.

The **Witbe Robots** are proprietary appliances able to test any service, from any device, over any network. They interact with services just like real end-users, and measure the quality visually & acoustically... Like your customers do. Their monitoring capabilities include services like Live TV, Web & Desktop App, VoD, over 3G, 4G, xDSL, OTT... They also embed proprietary algorithms like the **MOS** and the **Smartping**.

Witbe Robots: what do they look like?

Witbe Robots on racks



Rack 2U



Mini



Rack 1U



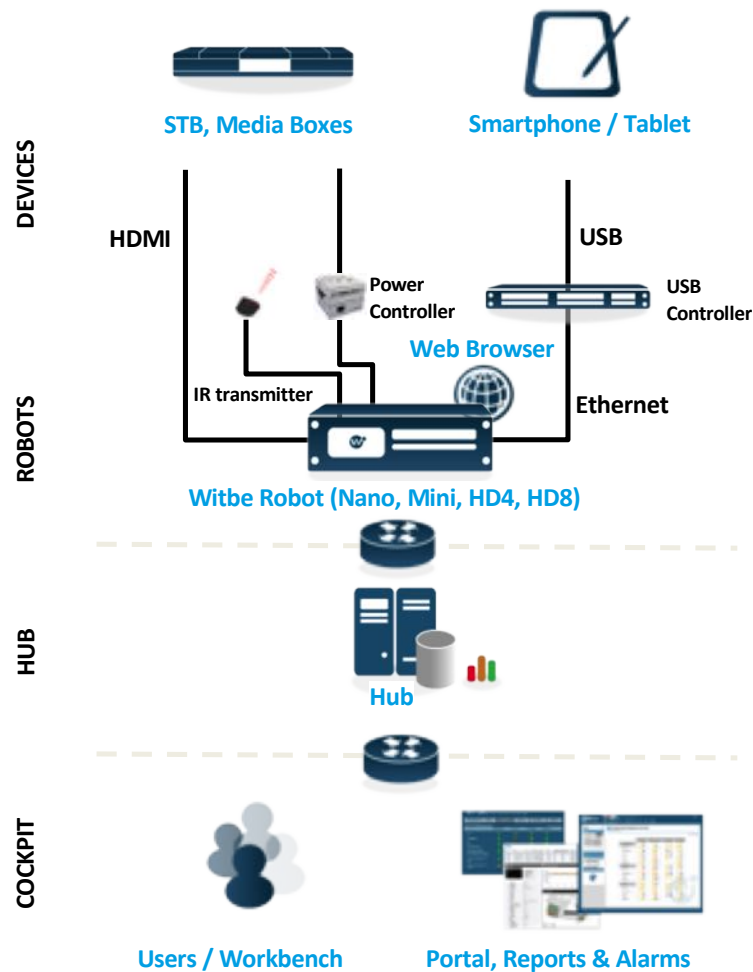
Nano



Virtual Machine



Witbe Robots: How do they interact with the devices



✓ Witbe characteristics

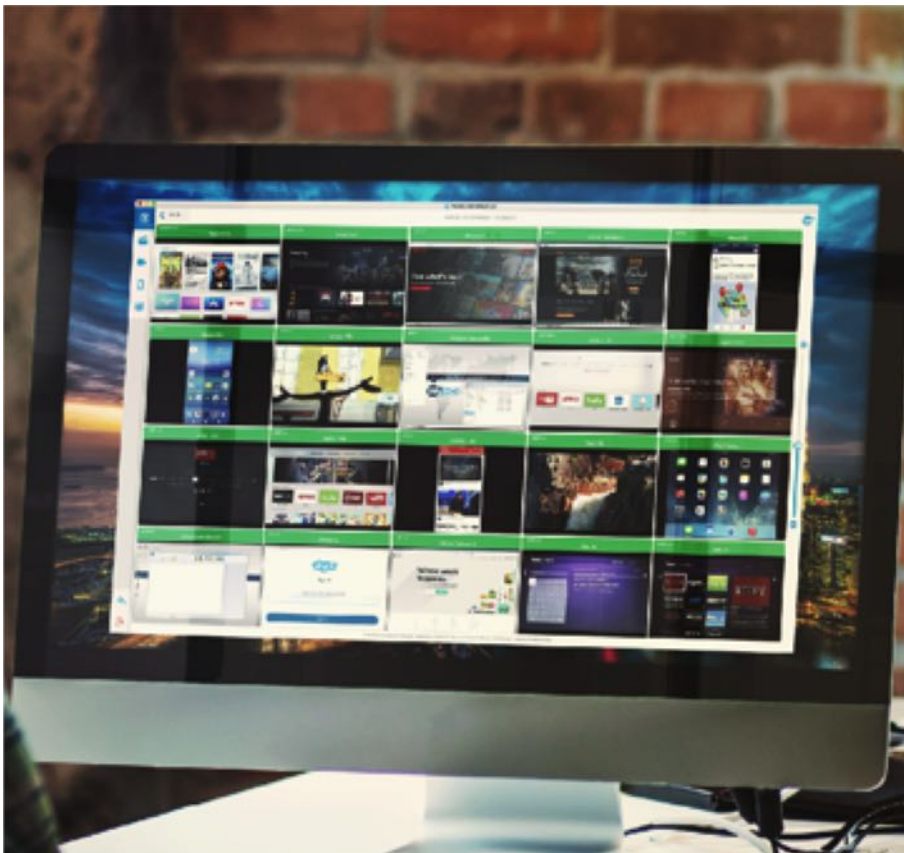
- ✓ Active robot, not a passive probe
- ✓ Non-intrusive, acts like a subscriber
- ✓ Stable reference
- ✓ Non-referenced perceptual A/V algorithms
- ✓ Network - agnostic
- ✓ Codec - independent
- ✓ Middleware - independent
- ✓ Supports encrypted and clear streams
- ✓ Detects problems caused by any part of the video process: head end, encoding, transport, decoding



Witbe Workbench: **the control center** of the Witbe Galaxy

Workbench is **the control center of the Witbe Galaxy**, offering a truly simple to use administration platform. It gathers three fundamental components:

- › **Device Manager**: configuration made easy and enjoyable, for everyone
- › **Script Writer**: develop several dozens of scenarios on several dozens of devices in just one dozen clicks
- › **Scheduler**: deploy and manage which scenarios run on what devices, without really having to think about it



Eyes, ears, and hands: **watch and troubleshoot** as real end-users

Witbe Remote Eye Controller (REC) gives life to the Witbe Robots in real-time. Using the REC, you can **watch in real-time and remotely take control of your devices in the field, as real customers**. Audio, video, remote control, guide, reboot: troubleshoot any service degradation with hands-on control before your subscribers start complaining.



Measuring in real-time what it feels like to watch a video

« MOS (Mean Opinion Score) » : Rating, on a scale of 5, **representing precisely how a human perceives the quality of a video stream.**

Witbe Video MOS is a proprietary algorithm. It measures in real-time and **without any reference** stream the audio and video quality truly delivered to the End User.

It provides different KPIs visible by the human eye:

- › Jerkiness
- › Blockiness
- › Blurriness
- › Motion analysis
- › Spatial complexity analysis



The Smartping technology is unique. Whether you own the whole delivery infrastructure or not, **Witbe Smartping maps the critical nodes from end-to-end in real-time, and pinpoints the bottlenecks affecting your streams.** Using this complete view of your networks, you can enforce SLAs with third parties, have a deep understanding of the network routes used by OTT streams, and above all, efficiently improve your OTT delivery.

The Smartping technology is unique. Whether you own the whole delivery infrastructure or not, **Witbe Smartping maps the critical nodes from end-to-end in real-time, and pinpoints the bottlenecks affecting your streams.** Using this complete view of your networks, you can enforce SLAs with third parties, have a deep understanding of the network routes used by OTT streams, and above all, efficiently improve your OTT delivery.

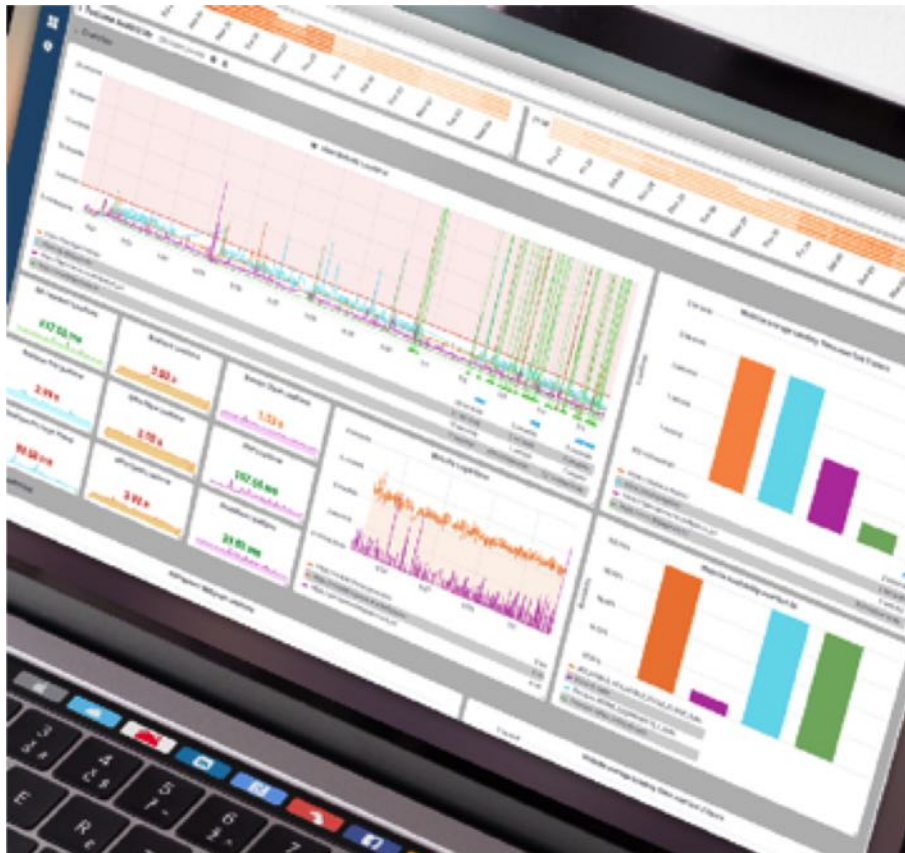


The brain of the Witbe Galaxy

The Witbe Portal **transforms the raw data** produced by the Witbe Robots **into meaningful and exploitable information**.

By storing up to 2 years of information collected by the Witbe Robots, the Witbe Portal enables quality assurance teams to understand why the issues detected by Witbe occurred.

Thanks to its multiple analysis components—aggregators, comparators, etc.—, the quality assurance teams **can then significantly improve the services**. And they can even detect the side effects that appear when using all the services simultaneously.

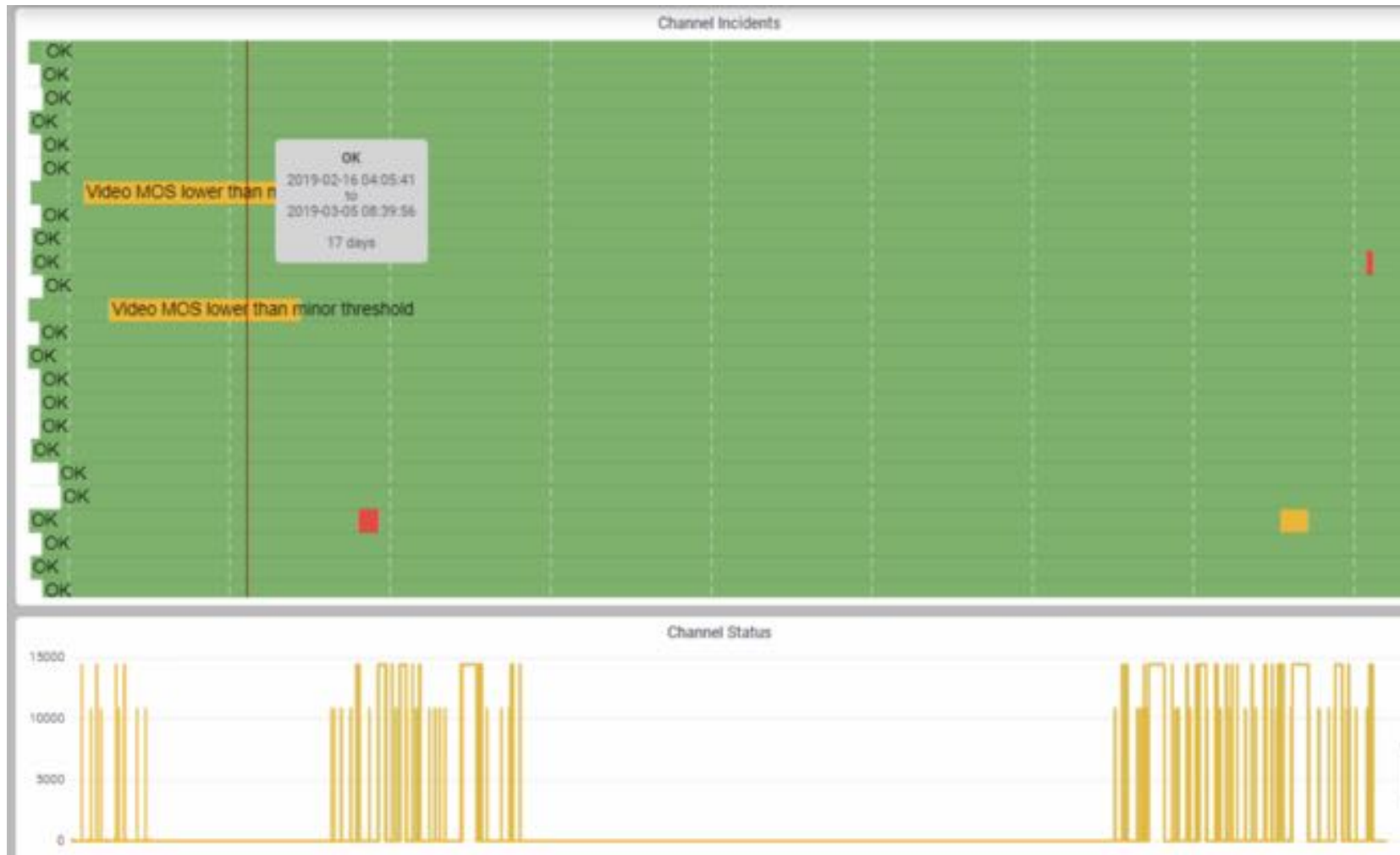


Analyze any service's quality through Witbe's **revolutionary reporting interface**

Part of the Witbe Suite 6.1, Witbe Datalab has been developed to **greatly improve and refine your Robots' data**, and to enhance the use of your service's KPIs. Accessible from a classic browser, **it provides knowledge on your service's quality with customizable reports**. Executives, decision makers and marketing can see correlation between service and quality. QA & Engineering teams have visibility into performance and infrastructure, and get **another point of entry to drill down**.









PUBLIC COMPANY
-EURONEXT GROWTH
since April 2016



LEADING QoE
INNOVATION
for 19+ years



+150 COLLABORATORS
32% are R&D engineers





A technology adopted by 300+ customers
over 45 countries

12



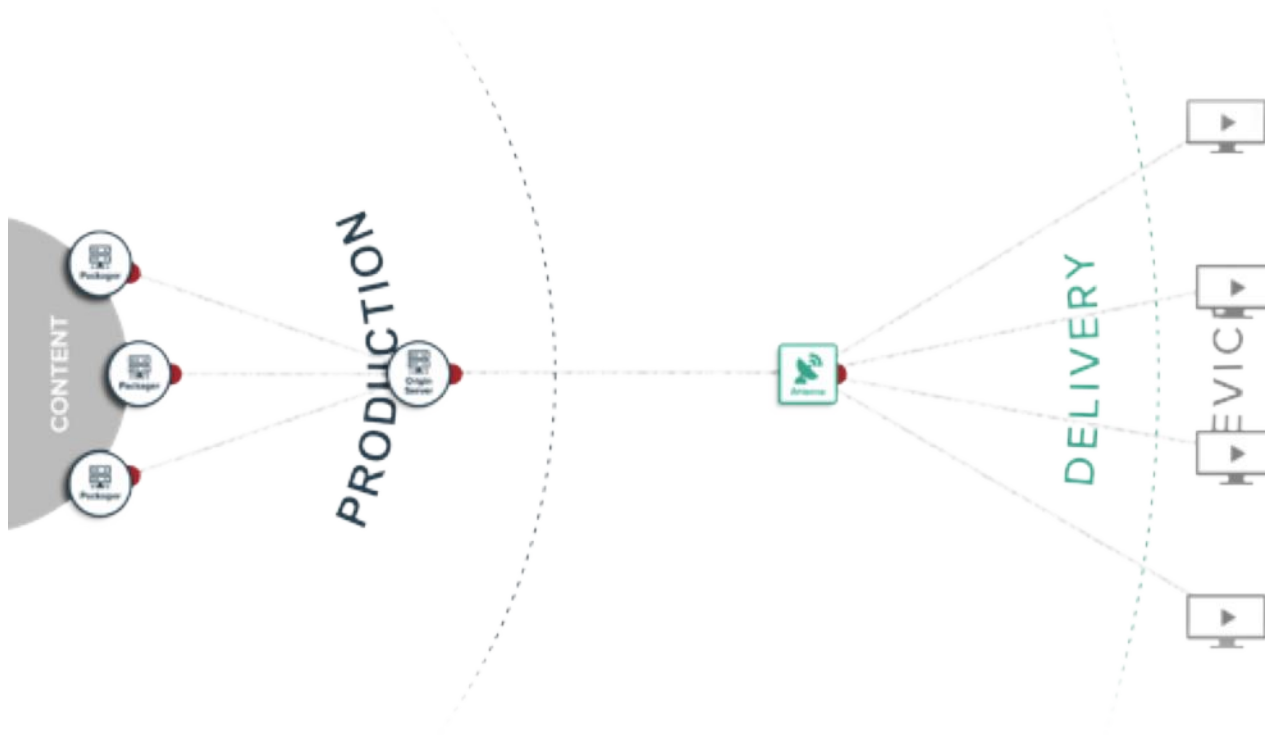


C

Witbe Story



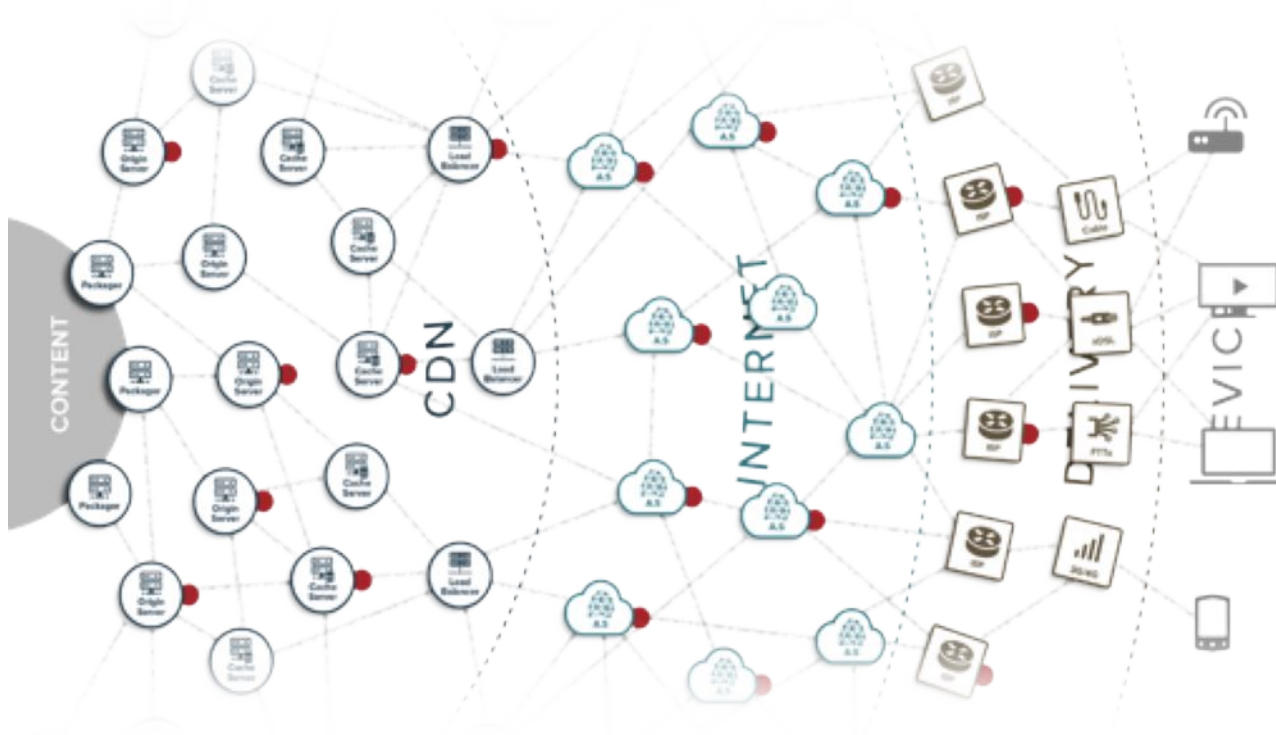
A long time ago, in a galaxy not that far away...



A long time ago, networks were very simple. Data was going from point A to point B. A probe reporting a good quality of service meant the end-users were getting a good quality of experience.

Operators and Broadcasters therefore scattered probes (●) over their networks, and directly linked the quality of the network to the Quality of Experience.

The sum of the Quality was equal to the Quality of the sum.

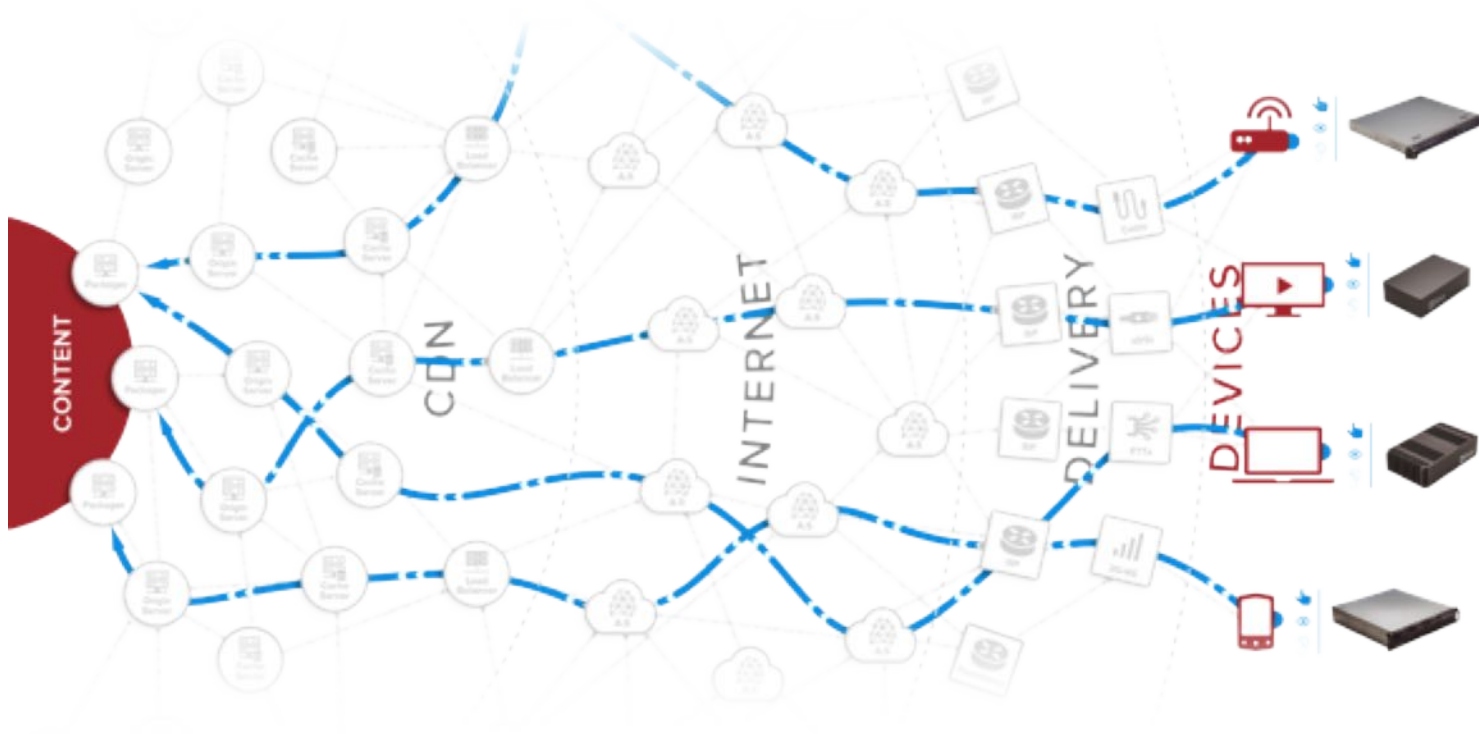


With the Internet, networks have evolved and are now much more complex. Nonetheless, **the way they are monitored has not changed**. Services providers still use probes scattered around the network to check on the quality of service (QoS).

Data today can take many different routes to reach the end-users, and the quality of service can seem good while the quality of experience perceived by the end-users is a disaster.

« The sum of the Quality is no longer equal to the Quality of the sum. »

— Jean-Michel Planche



And that's where Witbe robots can help.

By using digital services and devices just like normal end users, they can assess whether the service is delivered, whether it is the correct one, and whether it works as well as it should. Thanks to powerful algorithms, they can evaluate the quality of experience of a service visually.

Strategically placed over a network and testing a service 24/7, Witbe robots are able to proactively detect any service deterioration and can locate where the issues are coming from.

The Witbe robots perform active requests, ensuring **a monitoring from edge to core.**



Witbe is **precursing QoE Monitoring** and **anticipating major technological innovations** since 2000.



Provided by: Mega Hertz
800-883-8839

www.go2mhz.com
info@go2mhz.com

