



Sling Replacement



MHz[®]
MEGA HERTZ[®]

800-525-8386

Slingbox vs WITBE



How to continue your remote testing & much more?

	SLINGBOX	WITBE
All the features you already love		
- Video Remote Streaming	✓	✓
- Audio Remote Streaming	✓	✓
- Remote Control	✓	✓
- App made for any OS (Windows, Mac, Linux, iPad...)	✓	✓
Cutting edge device support		
- 4k Full Resolution STBs & OTT Devices		✓
- Any Smart TV (LG, Samsung, Sony, Android...)		✓
- Any Smartphone Devices		✓
- Bluetooth remote control		✓
- RF for X1 Devices remote control		✓
Great for power users		
- Remotely hard reboot devices		✓
- Mosaic view to see all devices on the same screen		✓
- Control multiple devices at once		✓
- Custom skins for remote control		✓
And for business users		
- Multi users		✓
- Secured access (SSO)		✓
Ready to do more		
- Already setup for test automation (via license upgrade)		✓
- Already setup for Video Quality monitoring (via license upgrade)		✓

Comes by Default on our product

Paying Options

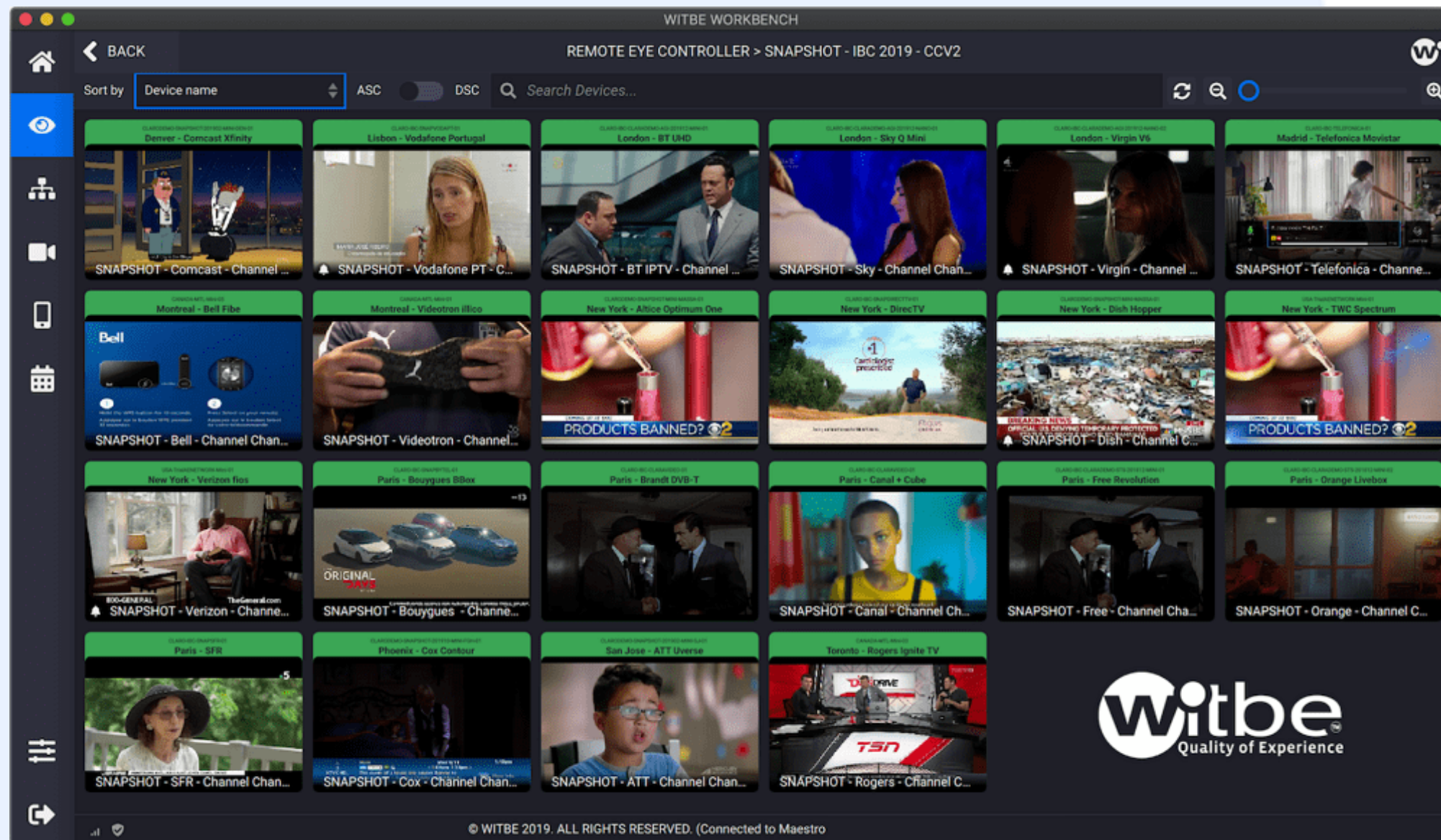
Comes by Default on our product

Comes by Default on our product

Paying Options

MHZ
MEGA HERTZ
800-525-8386

Witbe Remote Eye Controller



Remote Eye Controller

Troubleshoot as real end users thanks to the Witbe Remote Eye Controller (REC). Using the REC you can watch in real-time and remotely take control of your devices in the field.



Create your own clusters of devices

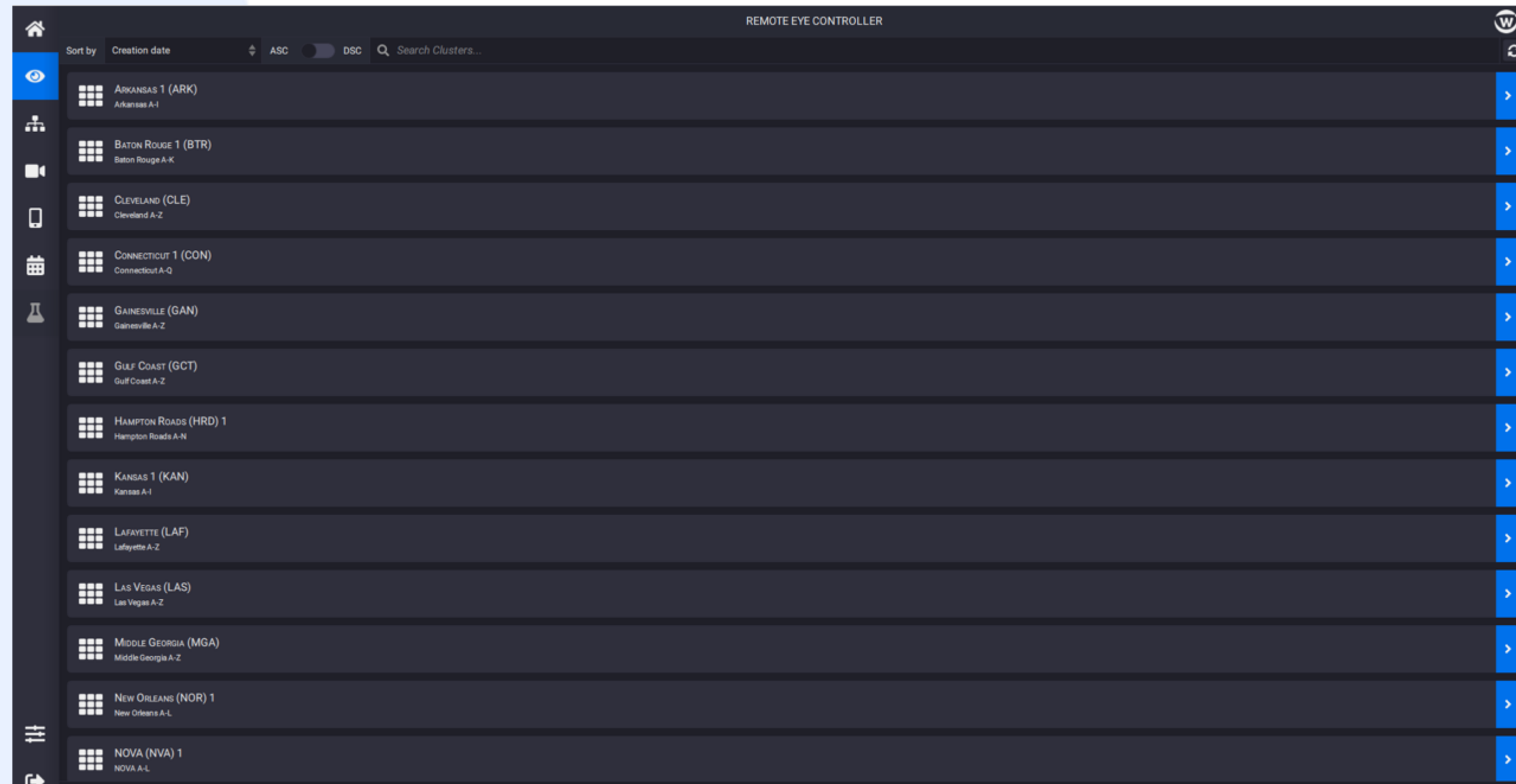


Organize your viewing experience by creating Clusters as you wish:

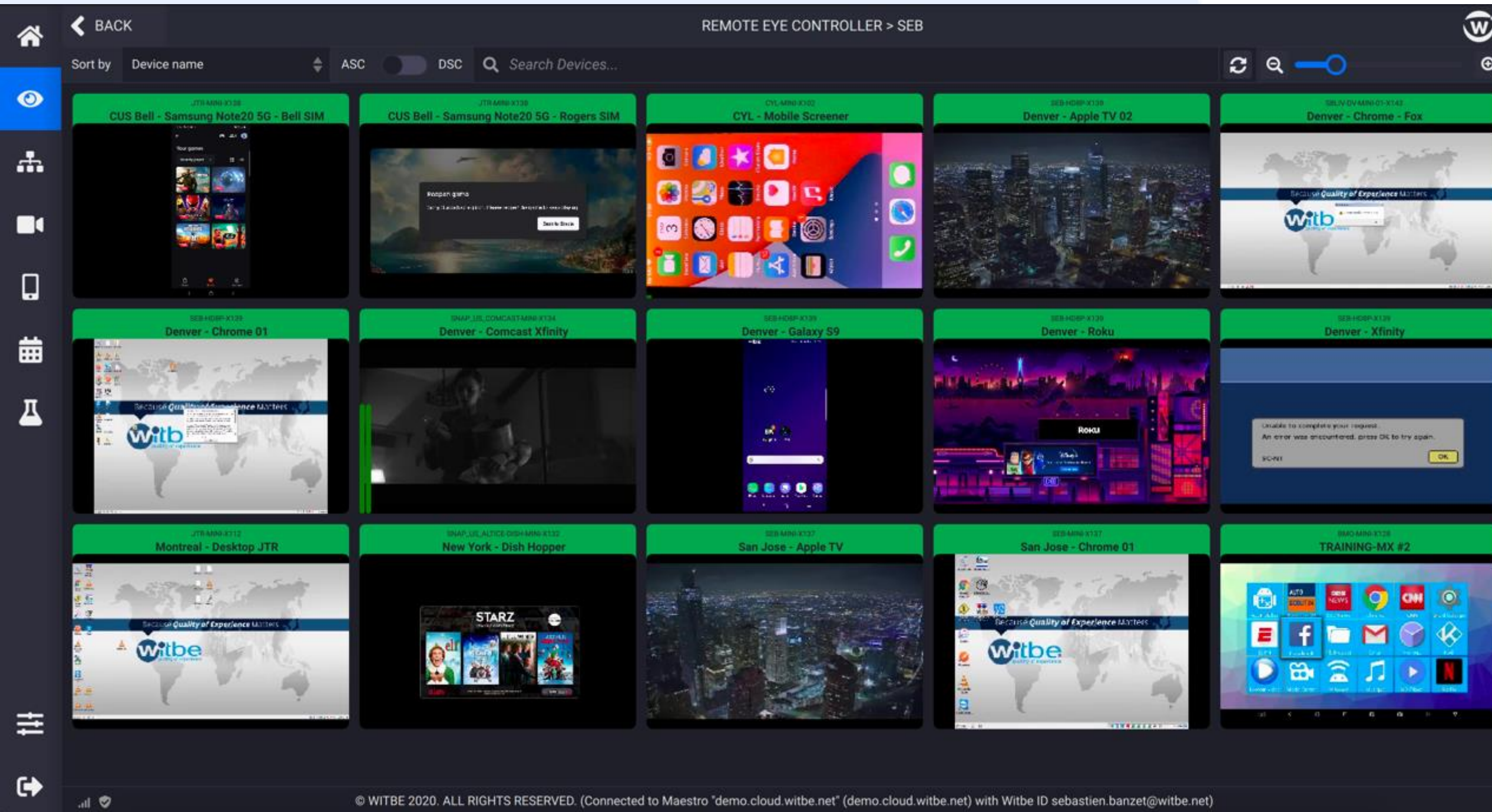
- By **City** or **Market**
- By **Video Platform** (TIVO, MobiTV, Legacy)
- Per **Device** type (AppleTV, Roku, STBs etc...)

Create an **unlimited** number of clusters

Up to **32 Devices** in a single cluster



THE MOSAIC



No need to connect to each single SINGLE WITBE Robot to view the video feed

Devices from **multiple robots** can be accessed in a **single** Mosaic view

Zoom in/Zoom out to display more or less tiles.

Any type of device can be displayed in the Mosaic

- HDMI Products such as STBs or Apple TV/ FireTV etc...
- Smartphones/Tablets such as iOS or Android devices
- Web Browsers such as Chrome or Firefox
- SmartTVs

Control a device Remotely

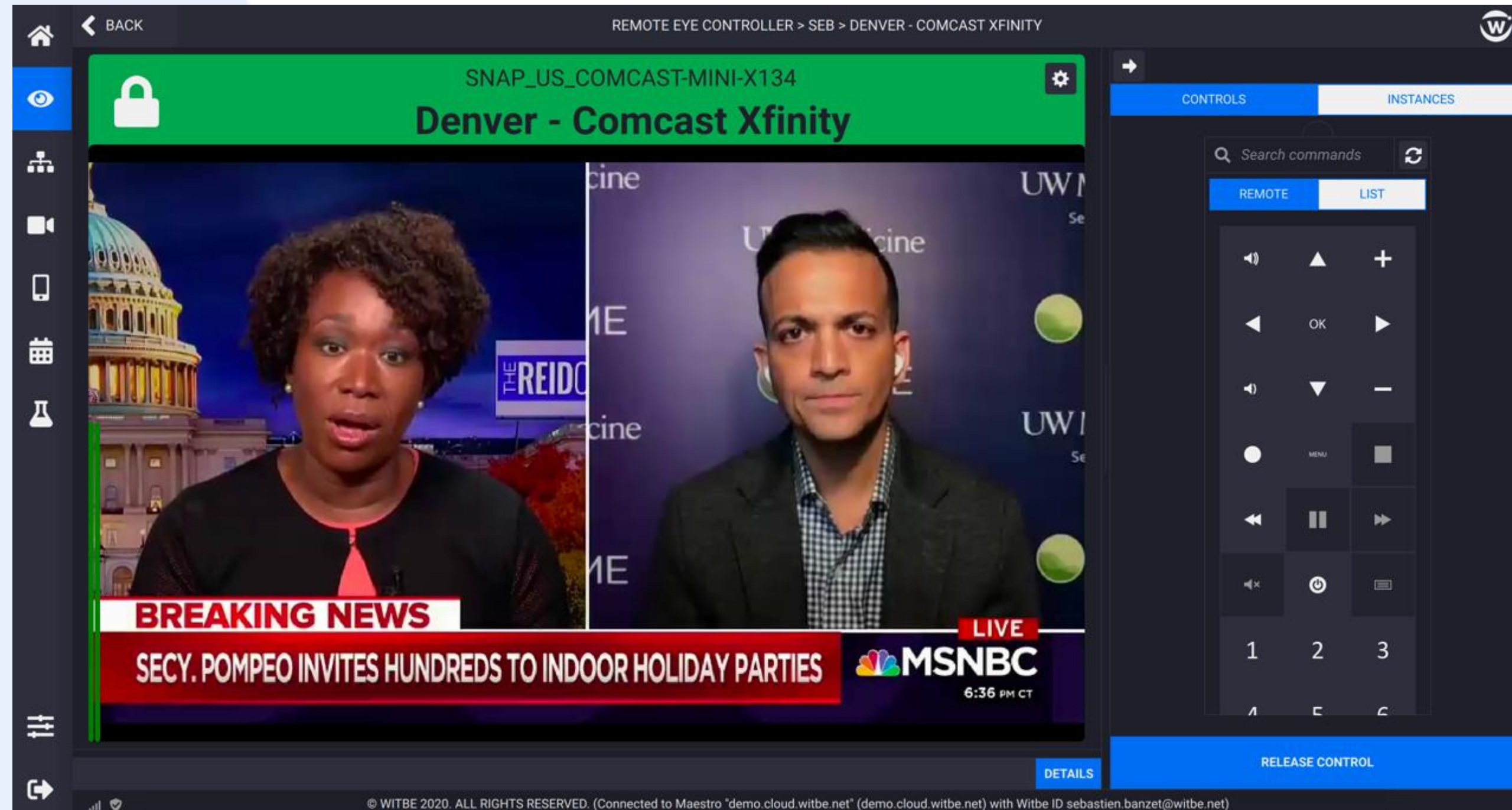


Double Click on one of the Tiles to **zoom in** on a device.

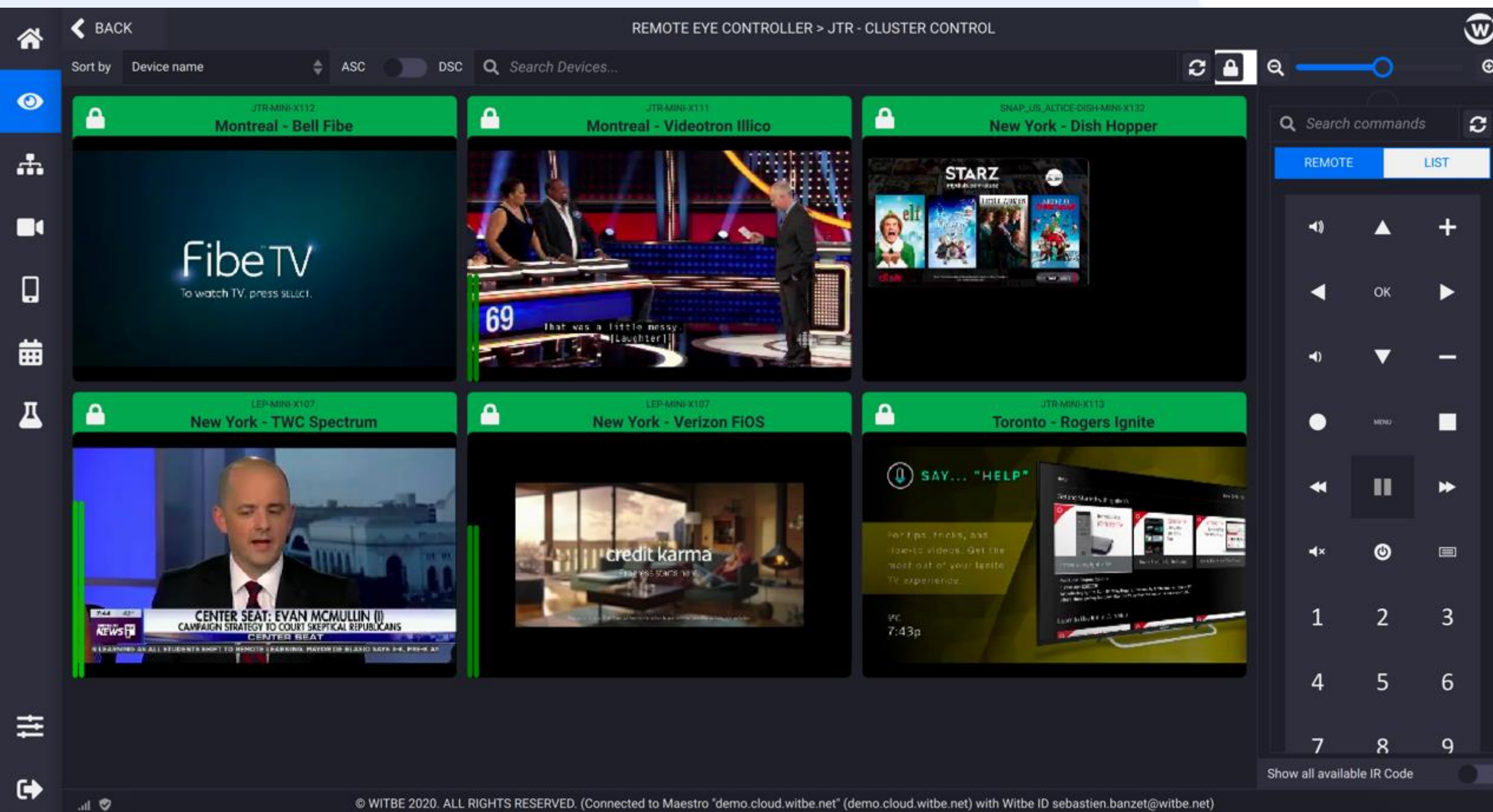
Audio bars on the side

Take control of the device on that screen and pilot it as if you were right in front

Customize your remote to display your very own remote control skin



Cluster Control



The **cluster control** function will allow you to pilot Multiple Set Top Boxes at once from a single interface.

Just press a button on the right of the picture (remote) and all devices in that cluster will **perform the same action**

Convenient if you want to tune multiple devices on the **same channel** at once during an outage



Paying Options

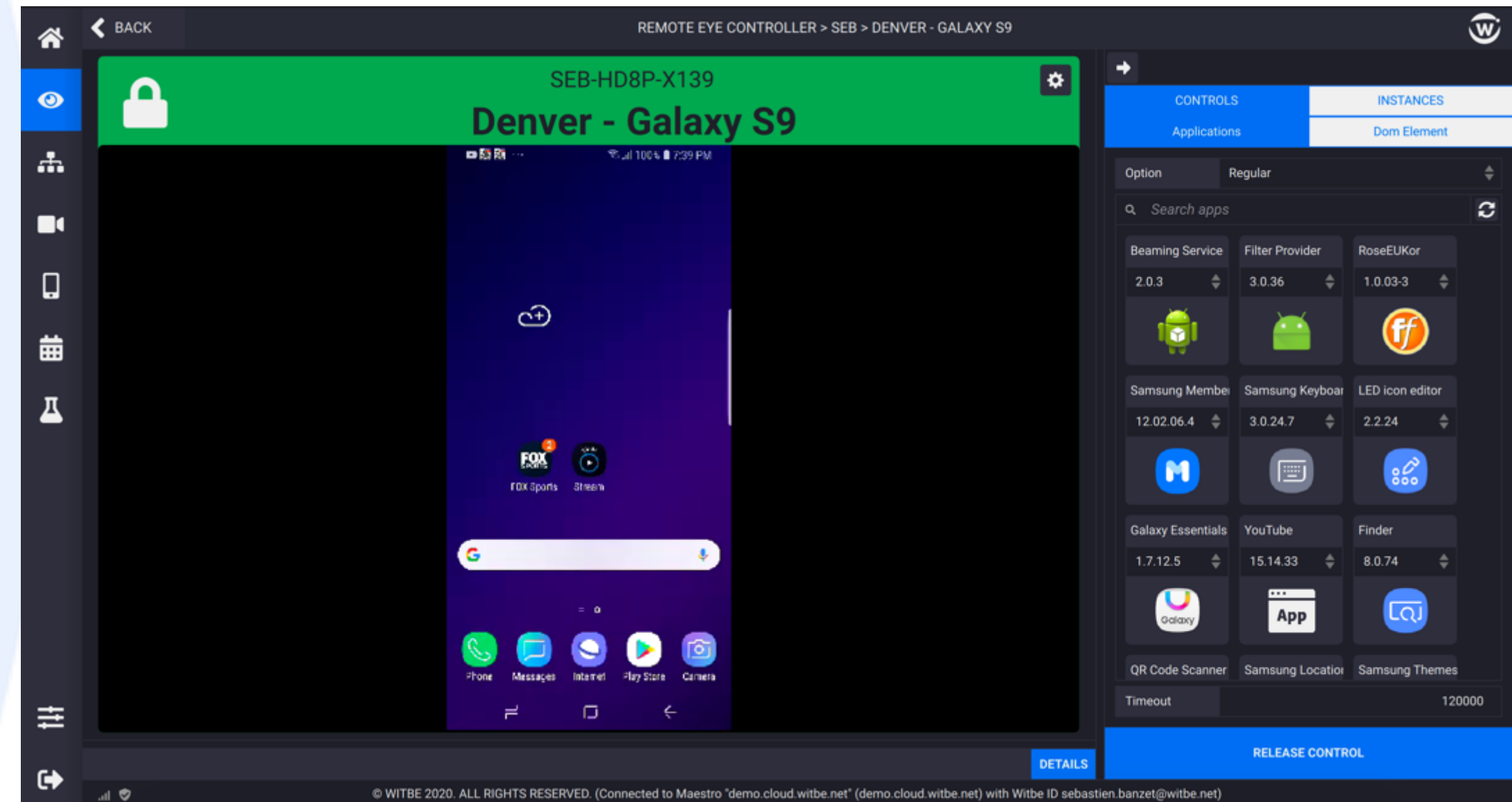


Support any type of devices:

With customers becoming more and more demanding to get Video anywhere, you can get a **full array of devices** connected to the WITBE Robots and Take control of them remotely directly from the Remote Eyes Controller

- **iOS** Phones and Tablets
- **Android** Phones and Tablets
- **Web** Browsers
- **4K** STBs
- **SmartTVs**

All that on top of the natively supported Smart Media Boxes like regular STBs, AppleTVs, FireTVs, Roku, Nvidia Shield, AndroidTV Boxes etc...



MHz
MEGA HERTZ
800-525-8386

Take it to the next level

The screenshot displays the WITBE Script Writer interface. On the left is a sidebar with a search bar and a list of standard blocks categorized into Administration, Logical, and Utility. The main workspace shows a flowchart of a scenario with steps like 'Set Element in Cor Device (Reference)', 'Demo Contexts contexts', 'Step Initialization', 'Step Launch disney+ ap', 'Step Logout if necessar', 'Step Login', 'Step Search for asset', 'Step Play asset', and 'Step Logout'. Each step has a 'SUCCESS' or 'FAILURE' indicator. On the right, there is a preview of a remote control interface for 'Denver - Apple TV 02' showing the 'MANDALORIAN' app and various navigation buttons. At the bottom, there is a 'RELEASE CONTROL' button and a copyright notice: '© WITBE 2020. ALL RIGHTS RESERVED. (Connected to Maestro "demo.cloud.witbe.net" (demo.cloud.witbe.net) with Witbe ID sebastien.banzet@witbe.net)'.

BACK SCRIPT WRITER > WORK ON SCENARIOS > [DISNEY] DISNEY + VOD

Search Standard Blocks...

Administration

- Container
- Step
- Threaded Container

Logical

- Evaluate Condition
- Loop
- Set Variable

Utility

- Common Operations
- Generate Random
- Get Next Asset
- Get Next Channel
- Get Witbe Metadata
- HTTP Request
- Load Data
- Log Message
- Reboot Device
- Save Data
- Pause
- Results Reporting

IN SUCCESS FAILURE

Set Element in Cor Device (Reference) SUCCESS

IN SUCCESS FAILURE

Demo Contexts contexts

IN SUCCESS FAILURE

Step Initialization

IN SUCCESS FAILURE

Step Launch disney+ ap

IN SUCCESS FAILURE

Step Logout if necessar

IN SUCCESS FAILURE

Step Login

IN SUCCESS FAILURE

IN SUCCESS FAILURE

Step Search for asset

IN SUCCESS FAILURE

Step Play asset

IN SUCCESS FAILURE

Step Logout

IN SUCCESS FAILURE

SEARCH

SEARCH commands

REMOTE LIST

RELEASE CONTROL

© WITBE 2020. ALL RIGHTS RESERVED. (Connected to Maestro "demo.cloud.witbe.net" (demo.cloud.witbe.net) with Witbe ID sebastien.banzet@witbe.net)

Create your own scenario and get the WITBE Robots to **perform** the Monitoring and Testing **for you**

Easy to use GUI with predefined blocks and a **drag and drop** interface enabling you to create scenarios in a few minutes

Cycle through each of your channels in no time without the need for human intervention and only **work on alerts raised**

MHZ
MEGA HERTZ
800-525-8386

Different flavors for different usages



Witbe Robots



Mini



Table Top Format.

Roughly the size of an old STB

Connect up to 4 devices

Rack 2U



Rackable Unit

Takes 2U of space in a rack

Connect up to 16 devices

MHZ
MEGA HERTZ
800-525-8386

Adopted by 300+ customers in 50 different countries



North America



Latin America



EMEA



Asia - Pacific