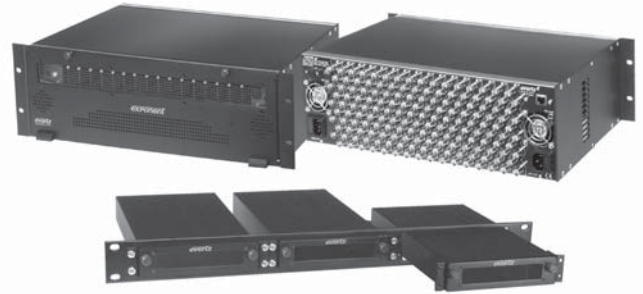


500FR, S501FR

Compact High Density Distribution Frame



The Evertz 500FR Compact Distribution Frame is an ideal solution for today's vast digital video distribution requirements. It handles the high-speed requirements of HDTV as well as Analog and SDTV signals. The frame design allows extraction of modules from the front without compromising performance even at 1.5Gb/s. The 500FR Compact Distribution Frame is a 3RU frame designed to house up to 16 single slot modules.



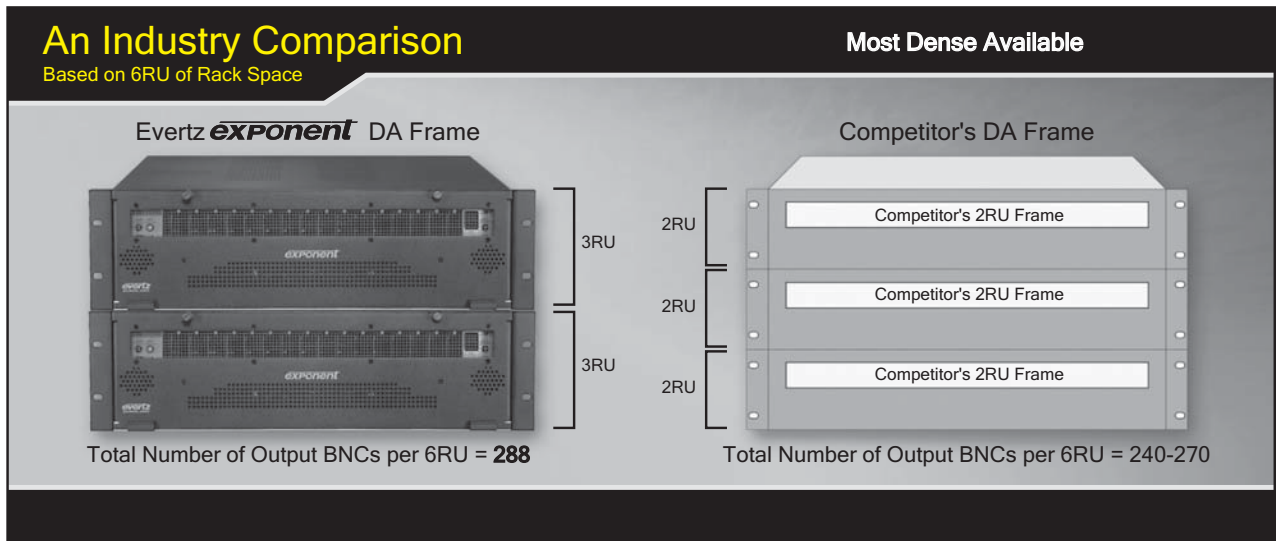
Note: The image shows 3 of the S501FR standalone Compact High Density Distribution Frames mounted into the S501FR-RP Rackmount panel S501FR

Specifications

| | | | | | |
|---|--|---|--|--|--|
| Electrical (500FR): AC Mains Input: Auto ranging, 100 to 240V AC, 50/60Hz Max. Operating Current: 2.6 A (@ 120V AC), 1.4 A (@ 240V AC) Max. Power Consumption: 200W Max. Module Load: 160W (10W per slot) Power Supply Configuration: Dual, redundant, separate AC inlets Connector: IEC 60320 - 1 per power supply Fuses: 4 amp, 250V time delay 5x20 mm. Safety: CSA Listed Complies with CE Low voltage Directive EMC: Complies with FCC part 15, class A Complies with EU EMC directive | | Electrical (S501FR): Voltage: 12V DC Nominal Auto ranging, 100 to 240V AC power adapter Power Consumption: 10W max Fuse: Internal self resetting fuse Connector: 2.5mm DC power jack Physical (500FR): Height: 5.25" H x 19" W x 9.5" D (133mmH x 483mmW x 368mmD) Module Capacity: 16 slots Weight: Approx 17lbs (7.7kg) with 2 power supplies, no slots occupied Approx. 32lbs (14.5kg) with 2 power supplies all slots occupied | | Physical (S501FR): Dimensions: 4.9"W x 1.2"H x 10.5"D (124mm W x 30mm H x 267mm D) Module Capacity: 1 single slot Weight: 1lb (.45kg) Certification: Safety: CSA Listed (500FR) Power adapter CSA listed (S501FR) Complies with CE Safety Directive Complies with FCC part 15, Class A EU EMC Directive EMC: BNC Per IEC 61169-8 Annex A (10 per slot) Signal Connections: BNC Per IEC 61169-8 Annex A (10 per slot) Status Indicators: PSU status LED, Local Error/Failure LED Tally Output Connector: 4-pin terminal, relay N/O, N/C for status/fault alarm 2A, 125V DC max 0-40°C optimal performance 0-50°C operating Temperature: | |
|---|--|---|--|--|--|

Ordering Information

| 500FR | Compact High Density Distribution Frame | S501FR | Standalone Compact High Density Distribution Frame |
|-------------------------|---|--------------------|---|
| Ordering Options | | Accessories | |
| +5PS | Redundant power supply | VSHEG42-120300-7 | Spare/additional power supply for S501FR |
| Accessories | | S501FR-RP | Rackmount panel mounts three S501FR enclosures in a 1RU rack space (Includes two blank panels for unfilled slots) |
| 500PS | Additional power supply for 500FR | | |



Notes:

- exponent** achieves the highest density with 288 BNC outputs (per 6RU)
- exponent** uses less power supplies thus less points of failure (per 6RU)

- exponent** provides a direct connection to an SNMP network. Some competitive pseudo SNMP solutions require intermediate application servers or protocol translators which add latency, single point of failure issues, cost, and complexity.

The Complete Solution Provider

