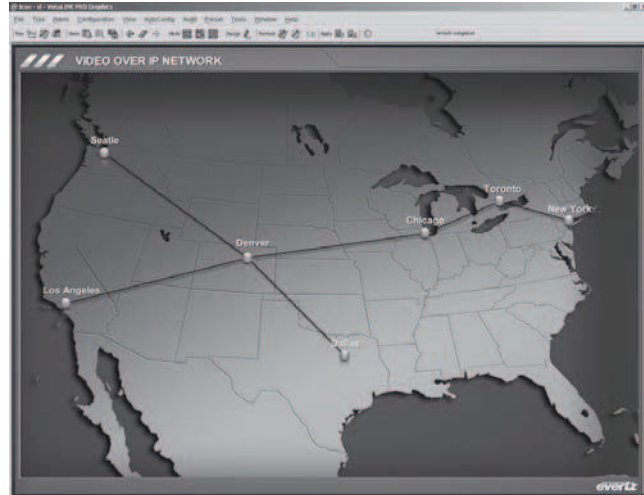




The 7880IP-ASI-IP is a complete hardware based solution to transform ASI to IP, IP to ASI. Module can also pass SD SDI over IP via Dual GigE interface. The 7880IP-ASI-IP can also regenerate IP from IP input with different settings and add FEC. As more providers are trying to deliver contribution and distribution quality video over IP networks, the 7880IP-ASI-IP is capable of bridging traditional compressed world (ASI) with the standard IP networks.

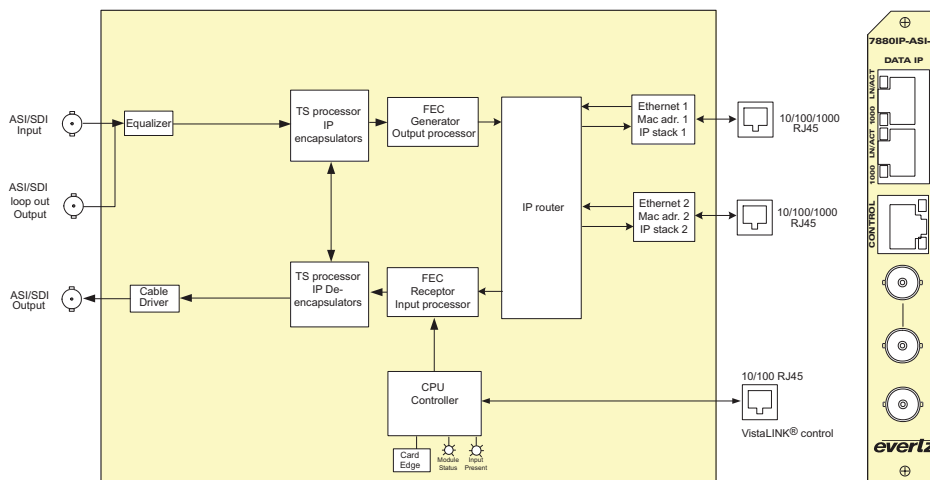
Controlled by the industry leading VistaLINK® PRO, the 7880IP-ASI-IP offers signal providers the capability to encapsulate MPEG-2 transport stream payload to a unicast or multicast standardized IP stream. The 7880IP-ASI-IP is also capable of receiving IP stream and re-create ASI stream. For contribution application, the 7880IP-ASI-IP offers industry standard FEC support for encapsulation or de-encapsulation.

The 7880IP-ASI-IP occupies one card slot and can be housed in a 1RU frame which will hold up to 3 modules, a 3RU frame which will hold up to 15 modules or a standalone enclosure.



### ► Features & Benefits

- Fully integrated with the Industry leading Evertz VistaLINK® PRO NMS system
- 2 Independent IP Ports, 1 input and 1 ASI/SDI output
- ASI/SDI to IP conversion
- IP to ASI/SDI conversion
- IP to IP conversion
- FEC encoding and decoding- Pro MPEG forum code of practice #3- release 2<cop3>
- Built-in RJ-45 control or via frame controller



### ► Specifications

#### Inputs and outputs:

- 1xASI/SDI input per DVB TR 101 891/SMPTE 259
- 1xASI/SDI output per DVB TR 101 891/SMPTE 259
- Min ASI TS input bitrate 100kb/s
- Max ASI TS input bitrate 213Mb/s
- 2xRJ45 10/100/1000 GigaE I/O for MPEG over IP
- 1xRJ45 10/100 control port

#### Encapsulation parameters:

- IP encapsulation for ASI input:  
MAC 802.3>IPV4>RTP>UDP>MPEG (RTP can be turned on and off)  
Select 1 to 7 MPEG packets per IP frame

- Optional FEC encoding (Pro MPEG forum code of practice #3- release 2<cop3>) with L&D following the following range:  
 $L * D \leq 100$   
 $1 \leq L \leq 20$   
 $4 \leq D \leq 20$

- IP address (IP, Subnet mask, Gateway) for the source
- IP address for the destination (Unicast and Multicast)
- Selection of the source port and destination port
- Set Local MAC address of the equipment

#### De-Encapsulation Parameters:

- Join Multicast by providing correct messaging using IGMP
- Selection of the UDP Ports
- Auto fail-over to redundant multicast address

#### Monitored parameters:

- Total Bitrate
- Null Packet Bitrate
- TS\_sync\_loss
- Continuity count error
- PID List

#### Electrical:

- Voltage: +12V DC
- Power: 11 W
- EMI/RFI: Complies with FCC Part 15, Class A EU EMC Directive

#### Physical (number of slots):

- 350FR: 1
- 7700FR-C: 1
- 7800FR: 1

### ► Ordering Information

<b>7880IP-ASI-IP</b>	ASI/SDI IP Encapsulator
----------------------	-------------------------

**Ordering Options** Rear Plate must be specified at time of order  
Eg. Model +3RU

#### Rear Plate Suffix

- +3RU 3RU Rear Plate for use with 350FR, 7700FR-C or 7800FR Multiframe
- +1RU 1RU Rear Plate for use with 7701FR Multiframe
- +SA Standalone Enclosure

#### Enclosures

- 350FR
- 7700FR-C
- 7800FR
- 7801FR
- 7701FR
- S7701FR

- 3RU Portable Multiframe which holds up to 7 single slot modules
- 3RU Multiframe which holds up to 15 single slot modules
- 3RU Multiframe which holds up to 15 single slot modules
- 1RU Multiframe which holds up to 4 single or 2 dual slot modules
- 1RU Multiframe which holds up to 3 single or dual slot modules
- Standalone enclosure

<https://www.go2mhz.com/product/bidirectional-asi-to-ip-gateway/>