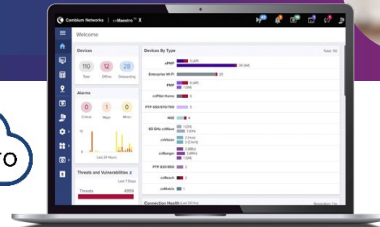


# XV2-21X Wi-Fi 6 Access Point

802.11ax Dual-Radio Indoor Access Point

## XV2-21X Quick Look:

- Dual-radio Wi-Fi 6
- 5 GHz (2x2), 2.4 GHz (2x2)
- 1 GbE RJ45 interface
- cnMaestro™ Network Management
- Limited lifetime warranty



## Value-Tier Wi-Fi for Any Market

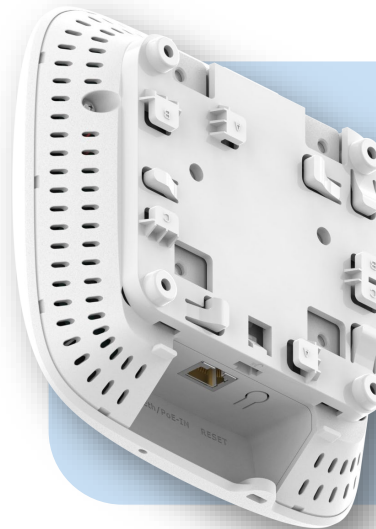
Cambium Networks' XV2-21X Wi-Fi 6 Indoor Access Point (AP) delivers a high performance-to-price ratio attractive to any market.

The XV2-21X can be adopted and managed by any of the Cambium management systems, including cnMaestro Essentials and cnMaestro X, available in cloud and on-premises versions. Choose the management type you need and change it at any time.

Unlike other value-tier access points, the XV2-21X is never locked into just one management selection.

## Designed for Fast Installation

The XV2-21X offers multiple installation methods included in the same shipping box. Mount the AP to a ceiling tile using the included steel plate; mount to an existing junction box with 83 mm center-to-center holes; twist lock the AP onto a 36 mm, 24 mm, and 14 mm T-bar; or simply mount it to any flat surface using the included wall anchors. No additional accessory brackets are needed.



XV2-21X back panel with mounting bracket

## XV2-21X Wi-Fi 6 Access Point

Specifications			
<b>Radios</b>	<b>5 GHz</b> 802.11 a/n/ac/ax, 2x2:2 <b>2.4 GHz</b> 802.11 b/g/n/ax, 2x2:2	<b>Power</b>	802.3af or 802.3at powered device Consumption with typical load: 11W
<b>Wi-Fi</b>	802.11 a/b/g/n/ac/ax	<b>Dimensions</b>	155 mm x 155 mm x 37 mm (6.1 in x 6.1 in x 1.46 in) <b>With Bracket:</b> 155 x 155 x 46 mm (6.1 x 6.1 x 1.81 in)
<b>SSID Security</b>	WPA3-SAE, WPA3-Enterprise, WPA2 (CCMP, AES, 802.11i), WPA2 Enterprise (802.1x/EAP), OSEN, OWE, Open	<b>Weight</b>	475 g (1.05 lb)
<b>Max PHY Rate</b>	<b>5 GHz radio</b> 2402 Mbps <b>2.4 GHz radio</b> 573.5 Mbps	<b>Mount Options</b>	Wall or ceiling, T-bar with included locking bracket, ceiling tile plate
<b>Ports</b>	1 x IEEE 10/100/1000 Mbps	<b>Ambient Operation Temperature</b>	0°C to 50°C (32°F to 122°F)
<b>Antenna Gain</b>	<b>5 GHz</b> 6 dBi <b>2.4 GHz</b> 5 dBi	<b>Storage Temperature</b>	-40°C to 70°C (-40°F to 158°F)
<b>FCC</b>	Ch 1–11, 36–48, 52–64, 100–144, 149–165	<b>Humidity</b>	95% RH non-condensing
<b>ISED</b>	Ch 1–11, 36–48, 52–64, 100–116, 149–165	<b>MTBF</b>	831,902 hours at 50°C ambient
<b>ETSI*</b>	Ch 1–13, 36–48, 52–64, 100–140, 149–173	<b>LEDs</b>	Multi-color status LEDs, dimmable, on/off
<b>ROW*</b>	Ch 1–14, 36–48, 52–64, 100–144, 149–173	<b>Certifications (compliance)</b>	Wi-Fi Alliance, Passpoint 3.0, 802.11 a/b/e/g/i/k/n/r/u/v/w/ac/ax, FCC, IC, ETSI, CE, EN 60601-1-2, IEC60950, IEC62368, UL2043, EN 61373

\*Individual country limits may apply. Please contact your regional sales manager for country-specific regulations. For Southeast Asia (SEA) countries, refer to the SEA Regulatory Details chart in this data sheet.

Standards	
<b>Wi-Fi Protocols</b>	Data coding support 16/64/256/1024-QAM Channel width support under 5 GHz band: 20/40/80/160 MHz TWT, long OFDM symbol, transmit beamforming, AMSDU, AMPDU, RIFS, STBC, LDPC, MIMO power save, MRC, BPSK, QPSK, CCK, DSSS, OFDM, OFDMA, UL/DL MU-MIMO IEEE 802.11 a/ac/ax/b/d/e/g/h/i/k/n/r/u/v/w

## XV2-21X Wi-Fi 6 Access Point

### Network Specifications

<b>Operational Modes</b>	Controllerless standalone cloud-managed cnMaestro, VM	<b>RF Management</b>	Multi-modal RF optimization supporting Auto-R for dynamic channel selection and dynamic power adjustment configured via cnMaestro, performed in the intelligent edge AP. RF monitor with channel utilization/packet error rate/interference.
<b>WLAN</b>	128 concurrent clients per radio, 256 per AP 16 SSID per AP		
<b>Security, Authentication Encryption</b>	Open, WPA2-AES with PSK, ePSK and Enterprise	<b>Band Steering</b>	Yes
	WPA3 with PSK (WPA3-SAE), ePSK, Enterprise, Enterprise-CNSA, OWE (Enhanced Open)	<b>Mesh</b>	Multi-hop, either band
	OSEN and PMF (802.11 W)	<b>Scheduled WLAN</b>	On/off by day, week, time of day
	MAC authentication with local database or external database using RADIUS protocol 802.1X with EAP-TTLS, EAP-TLS/MSCHAPv2, PEAPv0/PEAPv1/EAP-PEAP/EAP-SIM/AKA/AKA'/FAST Hotspot 2.0 WEB authentication	<b>Data Limit</b>	Client bitrate/time/throughput limit per SSID
		<b>Network</b>	TCP connection log, NAT logging firewall, DHCP server, DHCP Relay option 82, VLAN pooling, RADIUS attribute, VID VLAN per SSID per user, ePSK with VLAN assignment per PSK LLDP, IGMP v1, v2
<b>Wi-Fi Quality of Service</b>	802.11e/WMM (packet marking either with 802.1p or IP DSCP), WMM-PS, U-APSD Multicast to unicast conversion	<b>Network Tools</b>	Wired and wireless remote packet capture, logging, WAN speed test, ZapD, remote network connectivity tools
<b>Service Availability</b>	Critical network resource monitor with SSID shutdown	<b>Tunnel</b>	L2TPv2, L2GRE, PPPoE
<b>Fast Roaming</b>	802.11k/r/v, OKC, cnMaestro-assisted roam	<b>IP</b>	IPv4, IPv6
<b>Guest Access/ Captive Portal Service (EasyPass)*</b>	cnMaestro-hosted EasyPass portal	<b>VLAN</b>	802.11Q, max 4096
	Multiple authentication methods supported to onboard guest user:	<b>Management Interfaces</b>	HTTP/HTTPS web interface, SSH, Telnet SNMP V1, V2, V3 Syslog, SNMP traps, NTP
	<ul style="list-style-type: none"> <li>• Radius-based authentication</li> <li>• Click-through with simple terms and conditions acceptance</li> <li>• Social login using Google®, Facebook®</li> <li>• SMS-based authentication (X)</li> <li>• Voucher-based access</li> <li>• Microsoft® Azure AD and Google Workspace® (X)</li> <li>• Sponsored guest access (X)</li> <li>• Self-registration access (X)</li> </ul>	<b>Security</b>	Rogue AP detection and termination(X), WIDs/WIPs, DoS protection L2–L7 firewall with application visibility(X) & control(X), DNS based access control(X). ACL and AirCleaner tools
	cnMaestro API support for external captive portal integration 802.11u, Hotspot 2.0	<b>Services</b>	Wi-Fi Calling control, NTP, Syslog, DNS proxy, SNMP traps, SNMPv1, SNMPv2c, SNMPv3, TCP and DNS logging
<b>Accounting</b>	RADIUS accounting, load balancing AAA servers, Dynamic Authorization COA, DM		
<b>API</b>	RESTful management and statistics API via cnMaestro X, presence location push APIs		

\*X features available in cnMaestro X.

## XV2-21X Wi-Fi 6 Access Point

### Management



**cnMaestro** uses a distributed intelligence architecture with cloud-first management and edge-intelligent APs that self-optimize for the RF environment. **cnMaestro** delivers a single pane-of-glass management for Cambium broadband fixed wireless, **cnMatrix** Ethernet Switches, enterprise-grade Wi-Fi APs, NSE Service Edge, and residential service provider routers.

**cnMaestro** can be deployed on cloud or on-premises via a virtual machine.

To serve a growing market for advanced management and services functionality, Cambium Networks offers **cnMaestro** in two management tiers:

#### cnMaestro X

Paid subscription that includes:

- Advanced device management capabilities
- Deep packet inspection (DPI) application visibility and Control for 2,400+ apps
- RESTful management and statistics API
- Presence location push APIs
- Graphic reports
- Webhooks
- Cambium Care Pro for 24x7 technical support
- Accelerated access to L2 engineers and regular software updates

#### Assists

- Assesses the network's configuration and identifies weak security settings and proposes a fix to ensure the network configuration is up to the top security industry standards

#### cnMaestro Essentials

License-free cloud management that delivers a disruptive total cost of ownership (TCO) for organizations of all sizes. Includes EasyPass for OneClick or voucher-based connection as well as WiFi4EU access.

#### X Assurance

- Helps to quickly identify network-wide connectivity issues by isolating every element of the client's lifecycle, either radio or network related
- Gives an overview quality index of the network and highlights each element's contribution to easily identify the worst offender
- Provides insight of probable causes and proposes fixes for the administrator to apply
- Provides individual client connectivity visibility throughout the entire lifecycle of its connection to easily identify each connection's result and highlight the failure reason, should there be any

#### EasyPass Portal with Additional Options

- Self-registration: Form-based access
- Sponsored guest: Guest ambassador-based access
- Paid access: Monetize the Wi-Fi access
- Microsoft Azure: Corporate user login
- Google Login: Web login using Google accounts

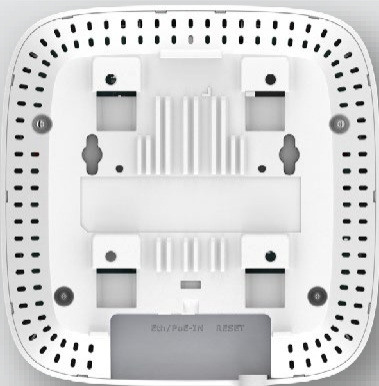
### XV2-21X Wi-Fi 6 Access Point



Front



Front Oblique



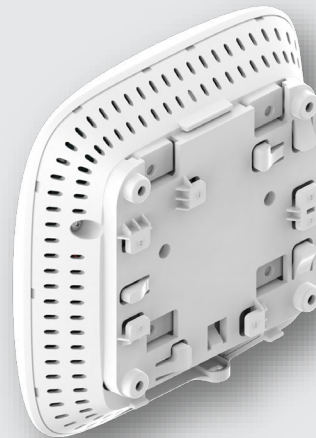
Back Panel



Bottom/Ports

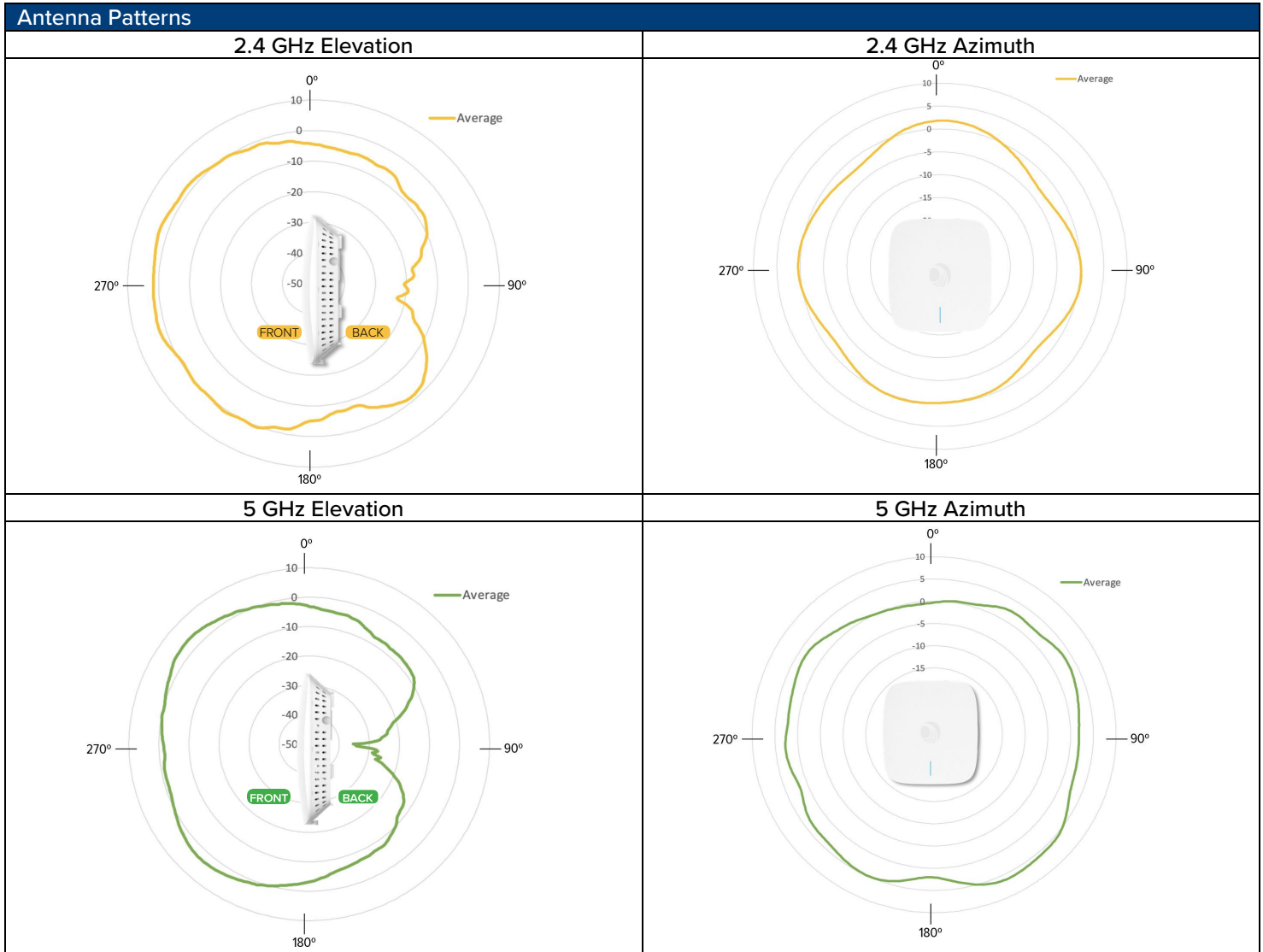


Front Panel with Mounting Bracket



Back Panel with Mounting Bracket

## XV2-21X Wi-Fi 6 Access Point



2.4 GHz Receive Sensitivity (dBm) per Chain			
HT20		HT40	
MCS0	-95.5	MCS0	-93
MCS7	-76.5	MCS7	-74
HE20		HE40	
MCS0	-95.5	MCS0	-92.5
MCS7	-76.5	MCS7	-73.5

2.4 GHz TX Power Target	
Rate	Pout (dBm)
MCS0 HT20	27
MCS7 HT20	25
MCS8 VHT20	25
MCS9 VHT40	24
MCS11 HE40	23

5 GHz Receive Sensitivity (dBm) per Chain							
VHT20		VHT40		VHT80		VHT160	
MCS0	-95.5	MCS0	-94	MCS0	-90	MCS0	-87.5
MCS7	-77	MCS7	-74	MCS7	-71.5	MCS7	-69
HE20		HE40		HE80		HE160	
MCS0	-95.5	MCS0	-93.5	MCS0	-90.5	MCS8	-65
MCS7	-76.5	MCS7	-74	MCS7	-71.5	MCS11	-57

5 GHz TX Power Target	
Rate	Pout (dBm)
MCS0 VHT20	27
MCS7 VHT20	24
MCS0 VHT40, VHT80	27, 27
MCS7 VHT40, VHT80	24, 24
MCS11, HE20, HE40, HE80, HE160	22, 22, 22, 21

## XV2-21X Wi-Fi 6 Access Point

### XV2-21X Ordering Information

<b>Regulatory Model</b>	XV2-21X
<b>XV2-21X0B00-US</b>	XV2-21X Indoor Dual radio WiFi 6 AP, 2x2, GbE, US
<b>XV2-21X0B00-EU</b>	XV2-21X Indoor Dual radio WiFi 6 AP, 2x2, GbE, EU
<b>XV2-21X0B00-RW</b>	XV2-21X Indoor Dual radio WiFi 6 AP, 2x2, GbE, RW
<b>XV2-21X0B00-CA</b>	XV2-21X Indoor Dual radio WiFi 6 AP, 2x2, GbE, CA
<b>C000000L141A</b>	PoE, 60W, 56V, 10GbE DC Injector, Indoor, Energy Level 6 Supply
<b>N000000L034B</b>	PoE, 30.5W, 56V, GbE DC Injector, Indoor, Energy Level 6 Supply, accepts C5 connector
<b>N000900L017A</b>	PoE, 15.4W, 56V, GbE DC Injector, Indoor, Energy Level 6 Supply, accepts C5 connector
<b>XA-DROPTILE15</b>	Recessed ceiling tile Installation Kit for 15mm T-bar, 20mm drop extension. 5 Pack
<b>XA-DROPTILE24</b>	Recessed ceiling tile Installation Kit for 24mm T-bar, 20mm drop extension. 5 Pack

### cnMaestro X Subscriptions

<b>MSX-SUB-XV2-21X-1</b>	cnMaestro X for one XV2-21X AP. Creates one Device Tier 3 slot. Includes Cambium Care Pro support. 1-year subscription
<b>MSX-SUB-XV2-21X-3</b>	cnMaestro X for one XV2-21X AP. Creates one Device Tier 3 slot. Includes Cambium Care Pro support. 3-year subscription
<b>MSX-SUB-XV2-21X-5</b>	cnMaestro X for one XV2-21X AP. Creates one Device Tier 3 slot. Includes Cambium Care Pro support. 5-year subscription

### Cambium Care Support

<b>CCADV-SUP-XV2-21X-1</b>	Cambium Care Advanced, 1-year support for one XV2-21X Wi-Fi 6/6E AP. 24x7 TAC support, SW updates, and NBD advance replacement for HW
<b>CCADV-SUP-XV2-21X-3</b>	Cambium Care Advanced, 3-year support for one XV2-21X Wi-Fi 6/6E AP. 24x7 TAC support, SW updates, and NBD advance replacement for HW
<b>CCADV-SUP-XV2-21X-5</b>	Cambium Care Advanced, 5-year support for one XV2-21X Wi-Fi 6/6E AP. 24x7 TAC support, SW updates, and NBD advance replacement for HW
<b>CCPRO-SUP-XV2-21X-1</b>	Cambium Care Pro, 1-year support for one XV2-21X Wi-Fi 6/6E AP. 24x7 TAC support and SW updates
<b>CCPRO-SUP-XV2-21X-3</b>	Cambium Care Pro, 3-year support for one XV2-21X Wi-Fi 6/6E AP. 24x7 TAC support and SW updates
<b>CCPRO-SUP-XV2-21X-5</b>	Cambium Care Pro, 5-year support for one XV2-21X Wi-Fi 6/6E AP. 24x7 TAC support and SW updates
<b>CCADV-UPG-XV2-21X-1</b>	Cambium Care Advanced Add-on to cnMaestro X, 1-year support for one XV2-21X. 24x7 TAC support, SW updates, and NBDS advance replacement for HW
<b>CCADV-UPG-XV2-21X-3</b>	Cambium Care Advanced Add-on to cnMaestro X, 3-year support for one XV2-21X. 24x7 TAC support, SW updates, and NBDS advance replacement for HW
<b>CCADV-UPG-XV2-21X-5</b>	Cambium Care Advanced Add-on to cnMaestro X, 5-year support for one XV2-21X. 24x7 TAC support, SW updates, and NBDS advance replacement for HW

## XV2-21X Wi-Fi 6 Access Point

EIRP is limited to the countries listed below.

SE Asia Regulatory Details					
Country	2.4 GHz (EIRP)	5 GHz (EIRP)			
	2400–2483.5 MHz	5150–5250 MHz	5250–5350 MHz	5470–5725 MHz	5725–5825 MHz
Indonesia	27 dBm (500mW) indoor	23 dBm (200mW) indoor	23 dBm (200mW) indoor	Not supported	23 dBm (200mW) indoor,
	36 dBm (4W) outdoor				36 dBm (4W) outdoor
Vietnam	23 dBm (200mW)	23 dBm (200mW)	23 dBm (200mW)	30 dBm (1W)	30 dBm (1W)
Philippines	26 dBm (400mW)	26 dBm (400mW)	26 dBm (400mW)	26 dBm (400mW)	26 dBm (400mW)
Malaysia*	27 dBm (500mW)	30 dBm (1W) indoor	30 dBm (1W) indoor	5470–5650 MHz	30 dBm (1W)
		23 dBm (200mW) outdoor		30 dBm (1W)	
Singapore	23 dBm (200mW)	23 dBm (200mW)	23 dBm (200mW)	30 dBm (1W)	30 dBm (1W)
Thailand	20 dBm (100mW)	23 dBm (200mW)	23 dBm (200mW)	30 dBm (1W)	30 dBm (1W)

\*Malaysia restricts the use of 5650 MHz–5725 MHz for regulatory reasons.

### LIMITED WARRANTY

Cambium Networks XV2-21X Wi-Fi 6 Access Point includes a limited lifetime hardware warranty that extends 5 years after end of sale.

#### ABOUT CAMBIUM NETWORKS

Cambium Networks enables service providers, enterprises, industrial organizations, and governments to deliver exceptional digital experiences and device connectivity with compelling economics. Our ONE Network platform simplifies management of Cambium Networks' wired and wireless broadband and network edge technologies. Our customers can focus more resources on managing their business rather than the network. We make connectivity that just works.



Provided by: **Mega Hertz** | 800-883-8839 | [info@go2mhz.com](mailto:info@go2mhz.com) | [www.go2mhz.com](http://www.go2mhz.com)

<https://www.go2mhz.com/product/wi-fi-6-access-point-2/>

08042025